

City of Ferguson  
Community Development Department



June 18<sup>th</sup>, 2024

St. Louis Boundary Commission  
222 S. Meramec Avenue, Suite 821T  
Clayton, MO 63105

Dear Boundary Commissioner,

The City is hereby transmitting the attached official map plan pursuant to the regulations for annexation promulgated by the St. Louis County Boundary Commission. The City certified that the attached map represents Ferguson's official map plan proposal in accordance with the requirements set forth in RSMo. 72.423.

Furthermore, the City of Ferguson designated that the following administrative representative has the authority to act on the City of Ferguson's behalf regarding this map plan and other matters related to the annexation proposal.

John Hampton, City Manager

City of Ferguson  
110 Church Street  
Ferguson, MO 63135

If you have any questions about the attached map plan or this transmission, please call us at (314) 524.5677.

Sincerely,

Rachel St.Pierre, Community Development Director

INTRODUCED BY: Council Members Present

AN ORDINANCE OF THE CITY OF FERGUSON, MISSOURI, ADOPTING A BOUNDARY CHANGE PLAN FOR SUBMISSION TO THE ST. LOUIS COUNTY BOUNDARY COMMISSION AND AUTHORIZING THE CITY MANAGER TO ACT ON THE CITY'S BEHALF IN TRANSACTIONS WITH THE BOUNDARY COMMISSION FOR THE PURPOSE OF POTENTIAL FUTURE ANNEXATIONS

\*\*\*\*\*

WHEREAS, THE City of Ferguson desires to have the option of annexing certain unincorporated territory in St. Louis County contiguous to the City, as hereinafter describes when and if the best wishes of the Council should prevail;

NOW, THEREFORE, BE IT ORDAINED BY THE CITY COUNCIL OF THE CITY OF FERGUSON, MISSOURI, AS FOLLOWS:

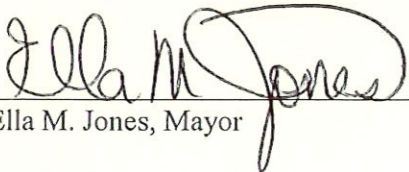
Section 1. The City Council, upon due consideration, adopts the Map Plan attached hereto as Exhibit A and incorporated herein by this regulation as the boundary change plan of the City of Ferguson for the annexation of territory located in unincorporated St. Louis County, known as Area 1 and Area 2, for the current planning cycle from 2024-2029 as contemplated by Sections 74.400 to 72.433, RSMo.


Section 2. The Map Plan submitted is consistent with the rules of the Boundary Commission and Sections 72.400 to 72.433, RSMo.

Section 3. The City Manager of the City of Ferguson is hereby authorized and directed to submit such Map Plan to the St. Louis County Boundary Commission for potential annexation of the territory mentioned above located in the unincorporated St. Louis County and to take future actions and execute all necessary documents to effectuate such purpose.

FIRST READING: 6/21/24 SECOND READING: 6/28/24

PASSED AND APPROVED BY THE CITY COUNCIL OF THE CITY OF FERGUSON, MISSOURI, THIS 28<sup>th</sup> DAY OF June, 2024.

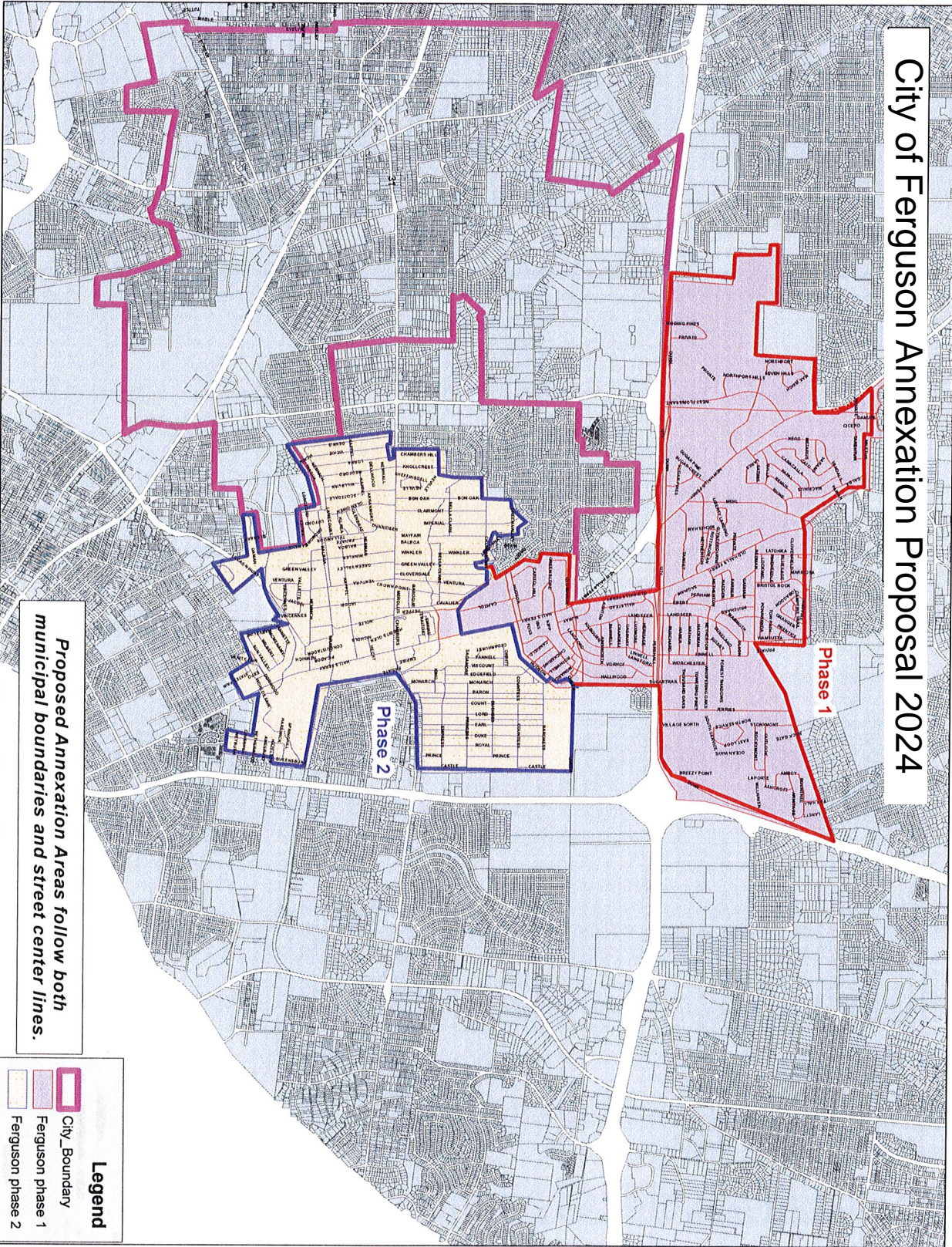
  
Ella M. Jones, Mayor

ATTEST:  
  
Octavia Pittman, City Clerk





# City of Ferguson Annexation Proposal 2024



Proposed Annexation Areas follow both municipal boundaries and street center lines.

**Legend**

- City\_Boundary
- Ferguson phase 1
- Ferguson phase 2