



SAINT LOUIS COUNTY
County Executive

May 7, 2024

St. Louis County Boundary Commission
168 North Meramec Avenue, Suite 140
Clayton, Missouri 63105

RE: 2024 Map Plan Submittal

Dear Boundary Commission Members:

On behalf of Saint Louis County, I submit the County's 2024 map plan for review. There are a total of five maps submitted for the Commission's use, including an overall Saint Louis County Map, and four geographic sub-area maps: North County, Mid County, West County, and South County. In addition to the 12 hardcopies of each map, I will have an electronic copy uploaded to the Boundary Commission's user portal.

The County's map plan depicts proposed established unincorporated areas. Additionally, the County's map plan shows unincorporated areas with populations under 2,500 for which the County currently provides services and is willing to continue to provide services in the future.

I have designated Mr. Jacob W. Trimble, AICP, Director of Planning, as the individual with the authority to act on my behalf with respect to the County's map plan. Mr. Trimble can be contacted as follows:

Jacob W. Trimble, AICP
Director of Planning
Saint Louis County Department of Planning
41 South Central Avenue, 5th Floor
Clayton, Missouri 63105
314-615-7852
JTrimble@stlouiscountymo.gov

Further, I hereby certify that the accompanying map plan represents Saint Louis County's official map plan proposal in conformance with the requirements of Section 72.423 RSMo.

Sincerely,

Dr. Sam Page
County Executive

Attest:

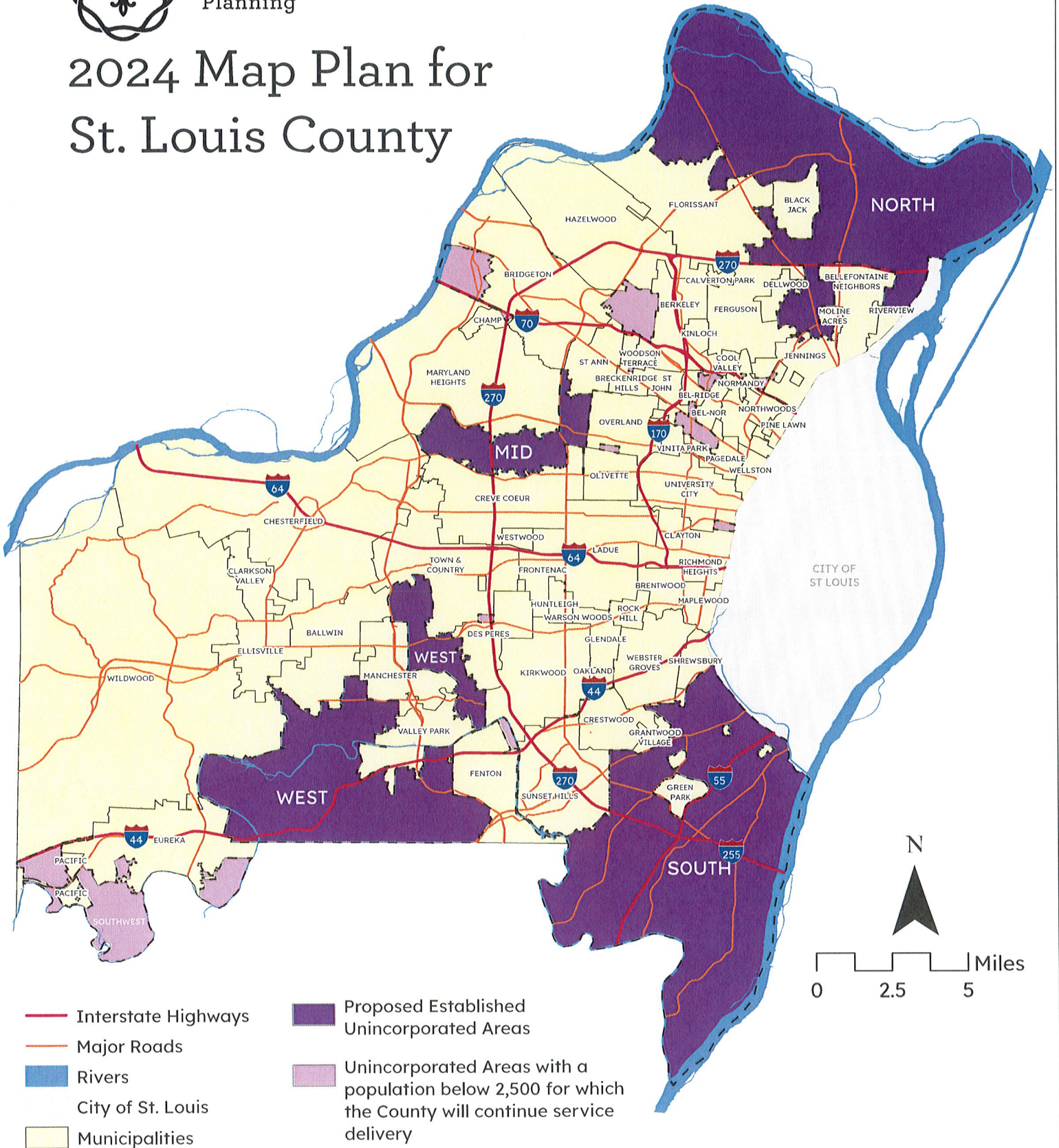
Jacob W. Trimble, AICP
Director of Planning

**OPPORTUNITY
CENTRAL**



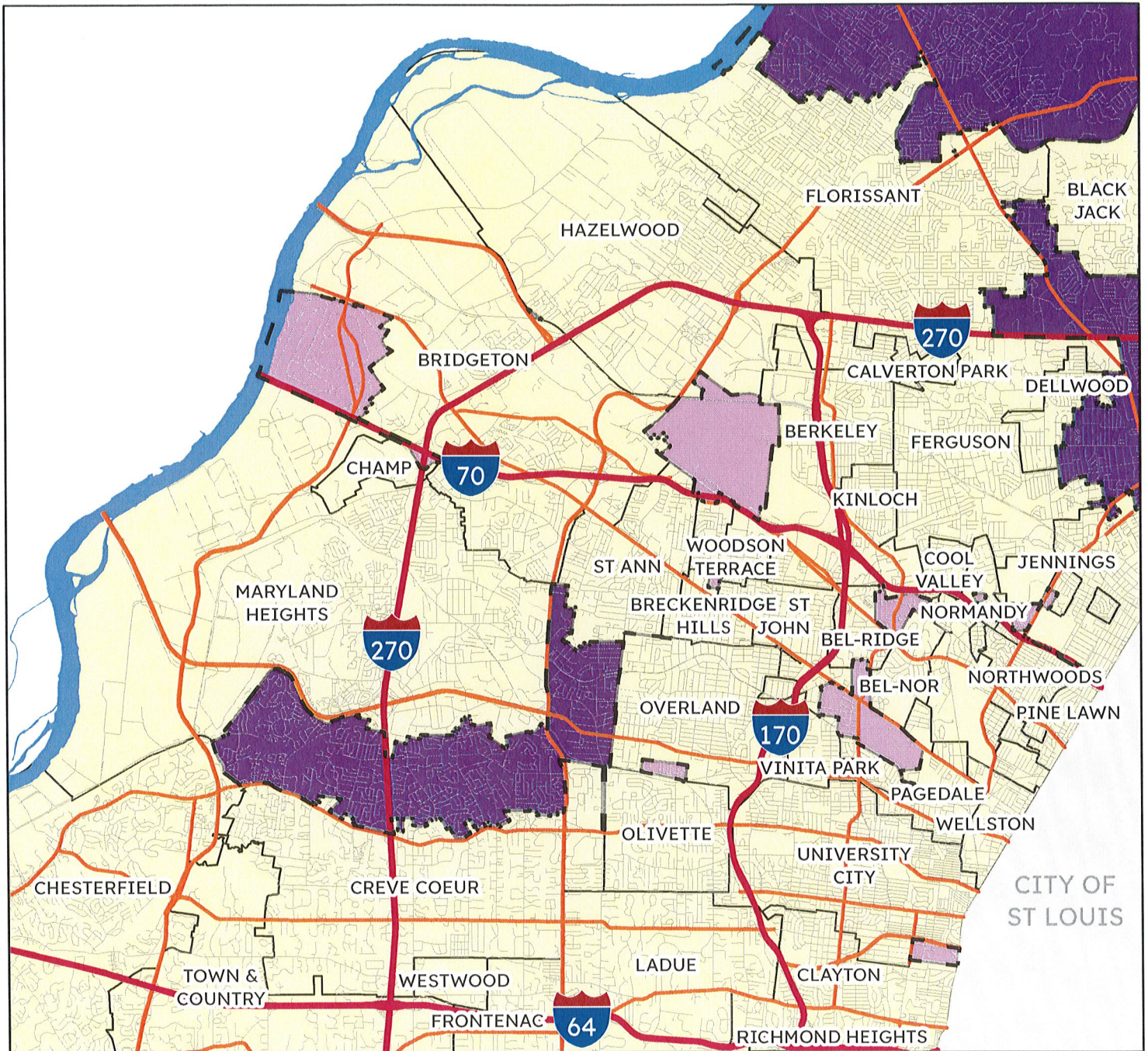
SAINT LOUIS COUNTY
Planning

2024 Map Plan for St. Louis County

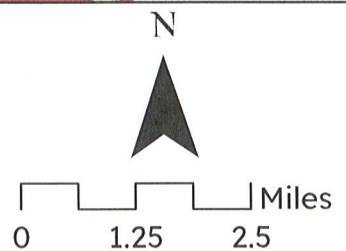




2024 Map Plan for Mid St. Louis County

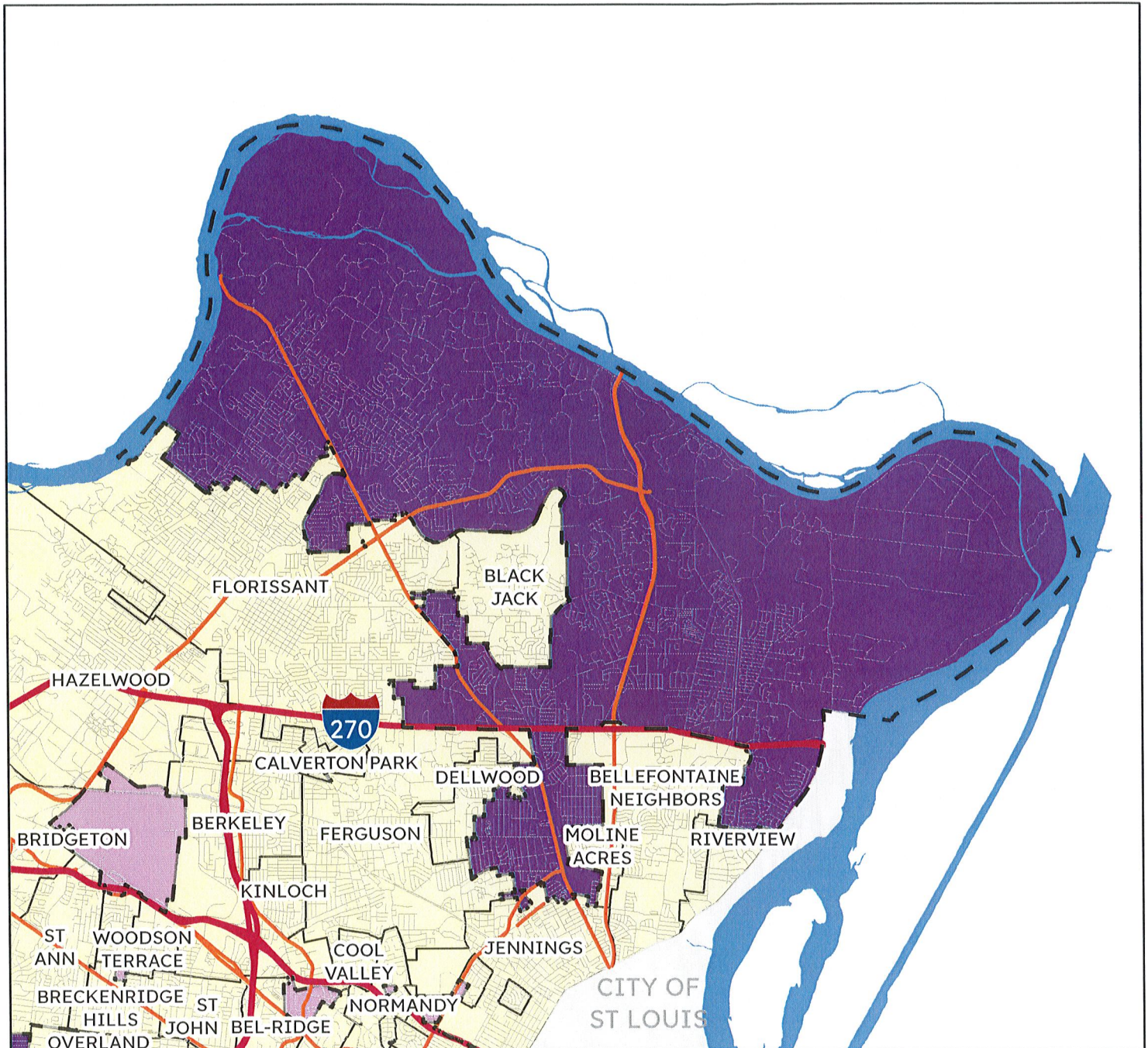


- Interstate Highways
- Major Roads
- Streets
- Rivers
- City of St. Louis
- Municipalities
- Proposed Established Unincorporated Areas
- Unincorporated Areas with a population below 2,500 for which the County will continue service delivery

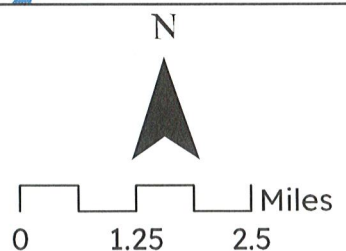




2024 Map Plan for North St. Louis County

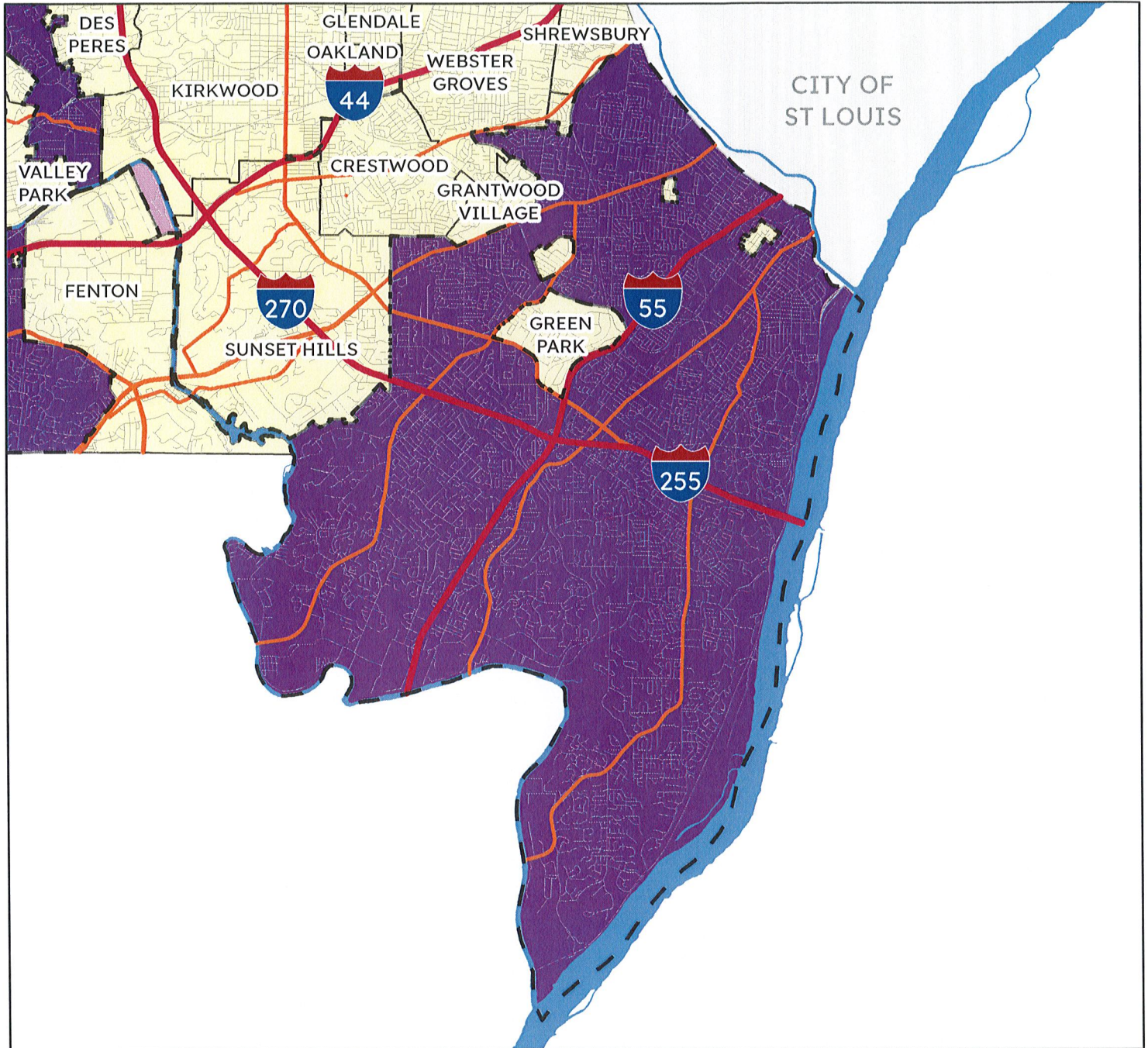


- Interstate Highways
- Major Roads
- Streets
- Rivers
- City of St. Louis
- Municipalities
- Proposed Established Unincorporated Areas
- Unincorporated Areas with a population below 2,500 for which the County will continue service delivery

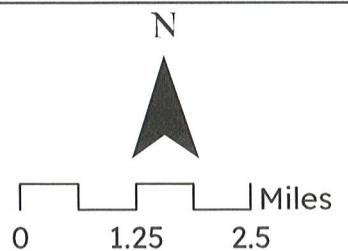




2024 Map Plan for South St. Louis County

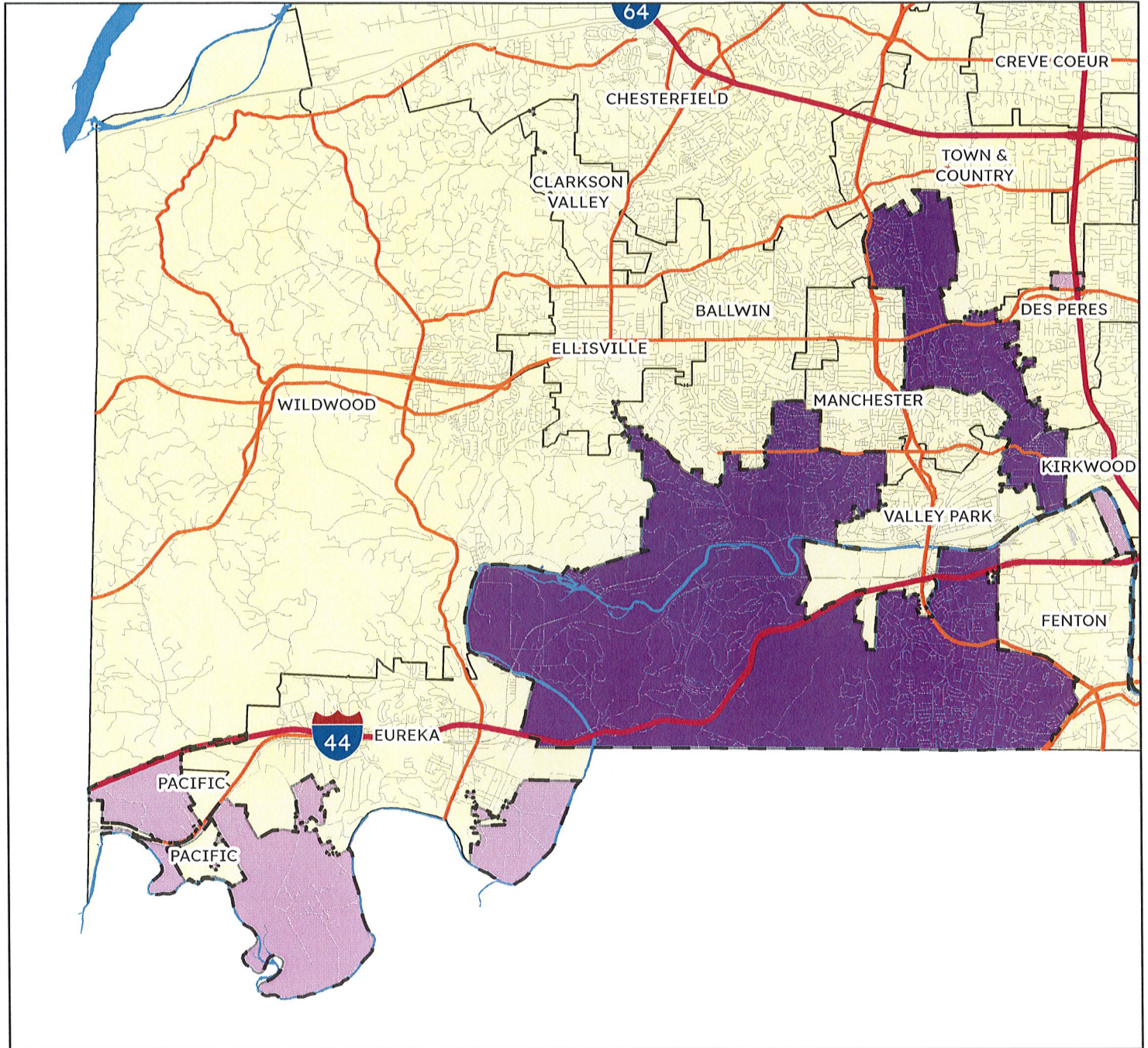


- Interstate Highways
- Major Roads
- Streets
- Rivers
- City of St. Louis
- Municipalities
- Proposed Established Unincorporated Areas
- Unincorporated Areas with a population below 2,500 for which the County will continue service delivery





2024 Map Plan for West St. Louis County



- Interstate Highways
- Major Roads
- Streets
- Rivers
- City of St. Louis
- Municipalities
- Proposed Established Unincorporated Areas
- Unincorporated Areas with a population below 2,500 for which the County will continue service delivery

