






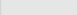

St. Louis County Map Plan

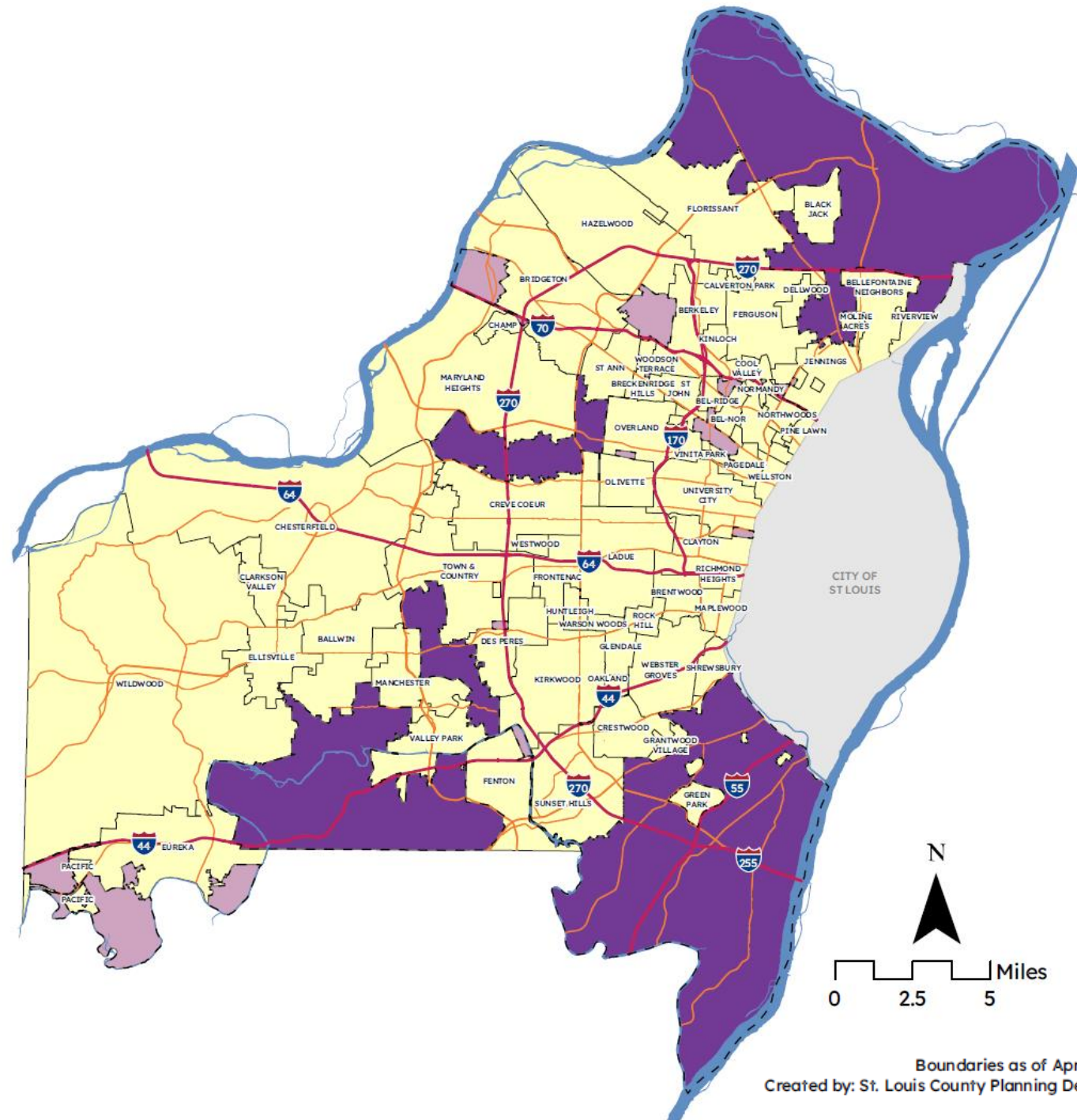
August 27, 2024



SAINT LOUIS COUNTY
Missouri

St. Louis County Overall

-  Proposed Established Unincorporated Areas
-  Unincorporated Areas with a population below 2,500 for which the County will continue service delivery
-  Interstate Highways
-  Major Roads
-  Rivers
-  City of St. Louis
-  Municipalities



St. Louis County West

Municipalities bordering unincorporated County include:

Wildwood

Pacific

Eureka

Ellisville

Ballwin

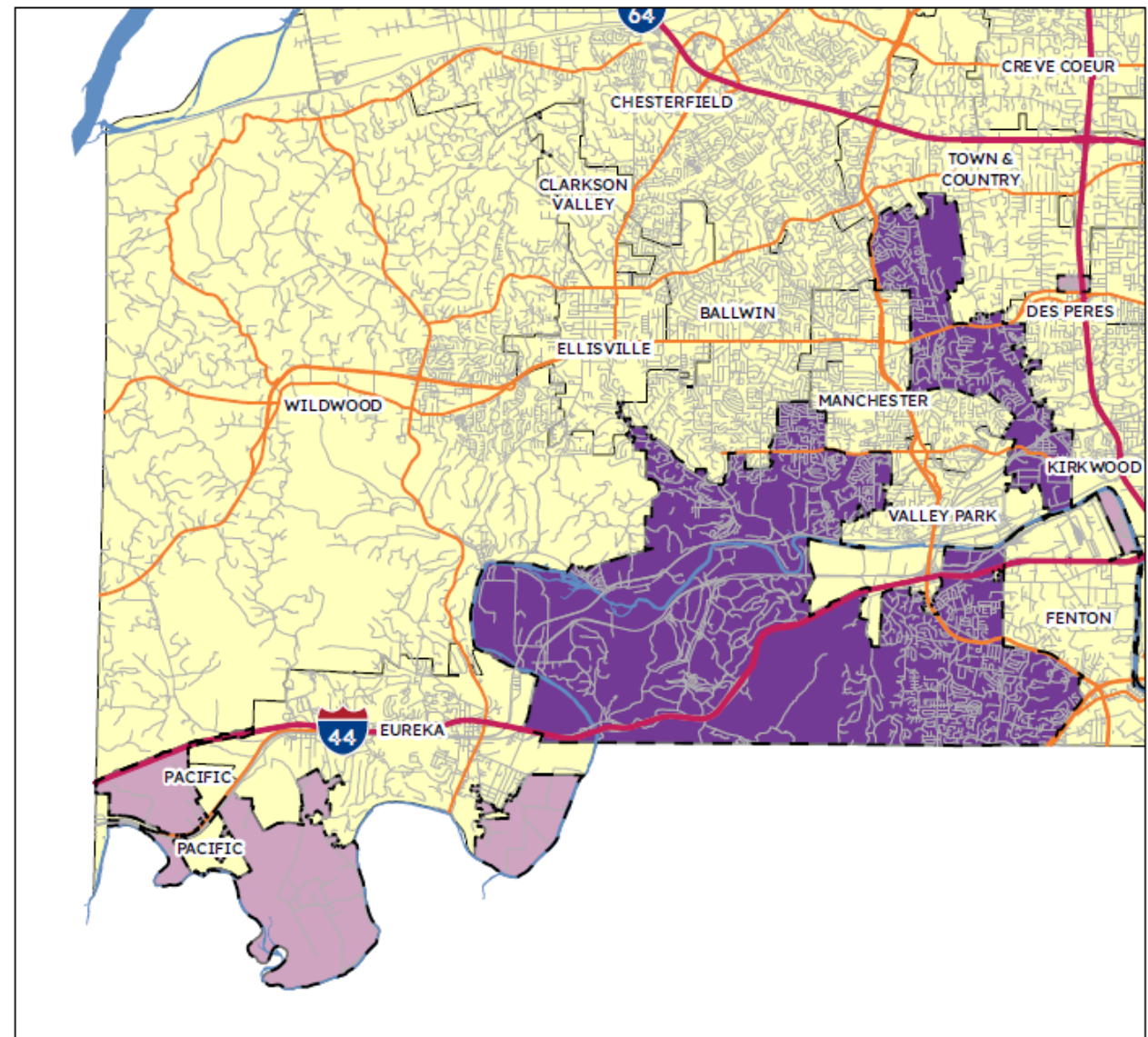
Manchester

Des Peres

Town and Country

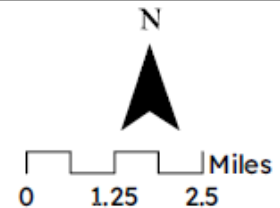
Twin Oaks

Valley Park



- Interstate Highways
- Major Roads
- Streets
- Rivers
- City of St. Louis
- Municipalities

- Proposed Established Unincorporated Areas
- Unincorporated Areas with a population below 2,500 for which the County will continue service delivery



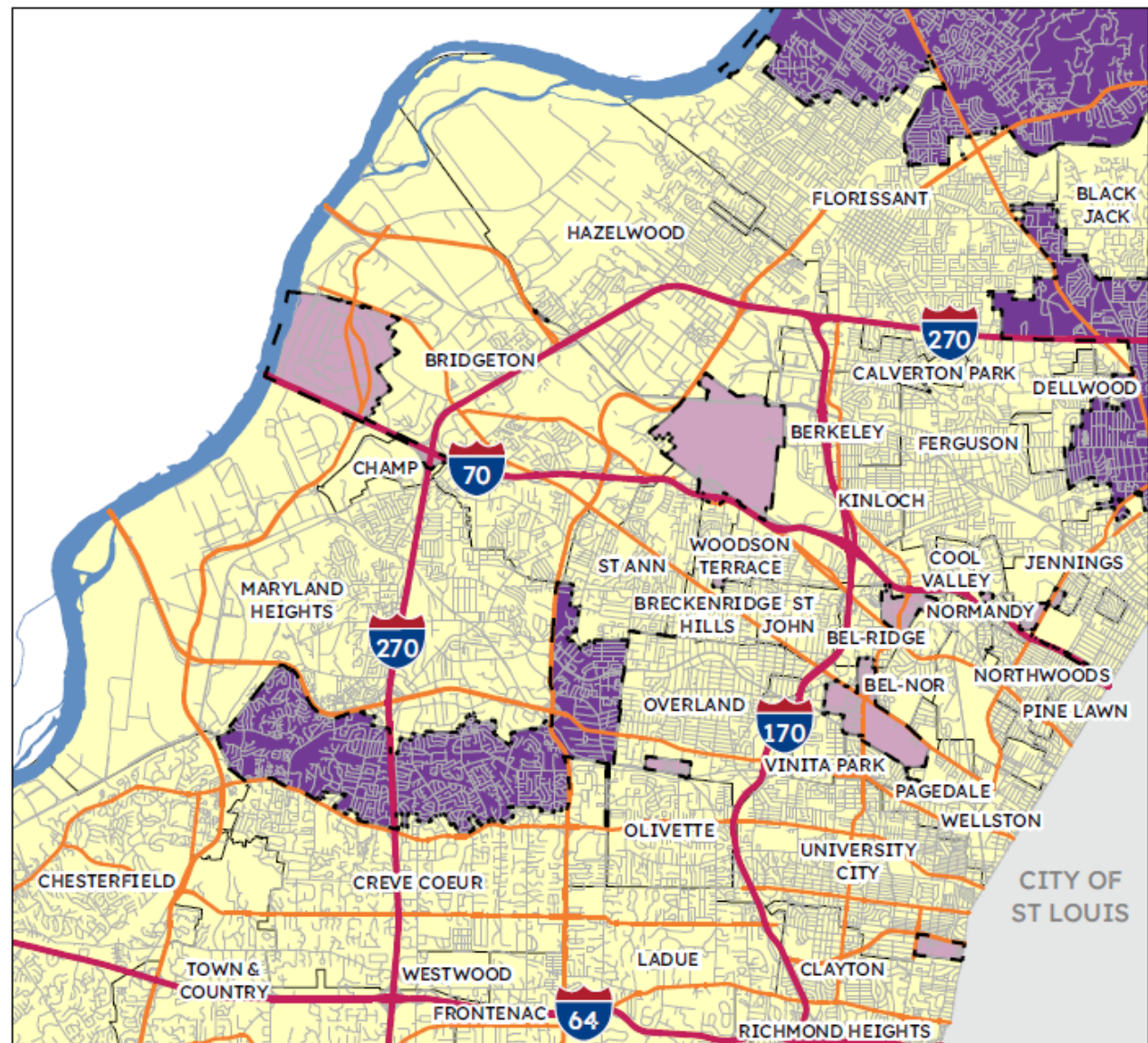
Boundaries as of April 24, 2024

Created by: St. Louis County Planning Department

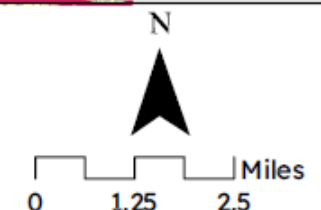
St. Louis County Mid

Municipalities bordering unincorporated County include:

- Chesterfield**
- Creve Coeur**
- Olivette**
- Overland**
- Saint Ann**
- Maryland Heights**
- Bridgeton**
- Vinita Park**



- Interstate Highways
- Major Roads
- Streets
- Rivers
- City of St. Louis
- Municipalities
- Proposed Established Unincorporated Areas
- Unincorporated Areas with a population below 2,500 for which the County will continue service delivery



St. Louis County North

Municipalities bordering
unincorporated County include:

Riverview

Bellefontaine Neighbors

Moline Acres

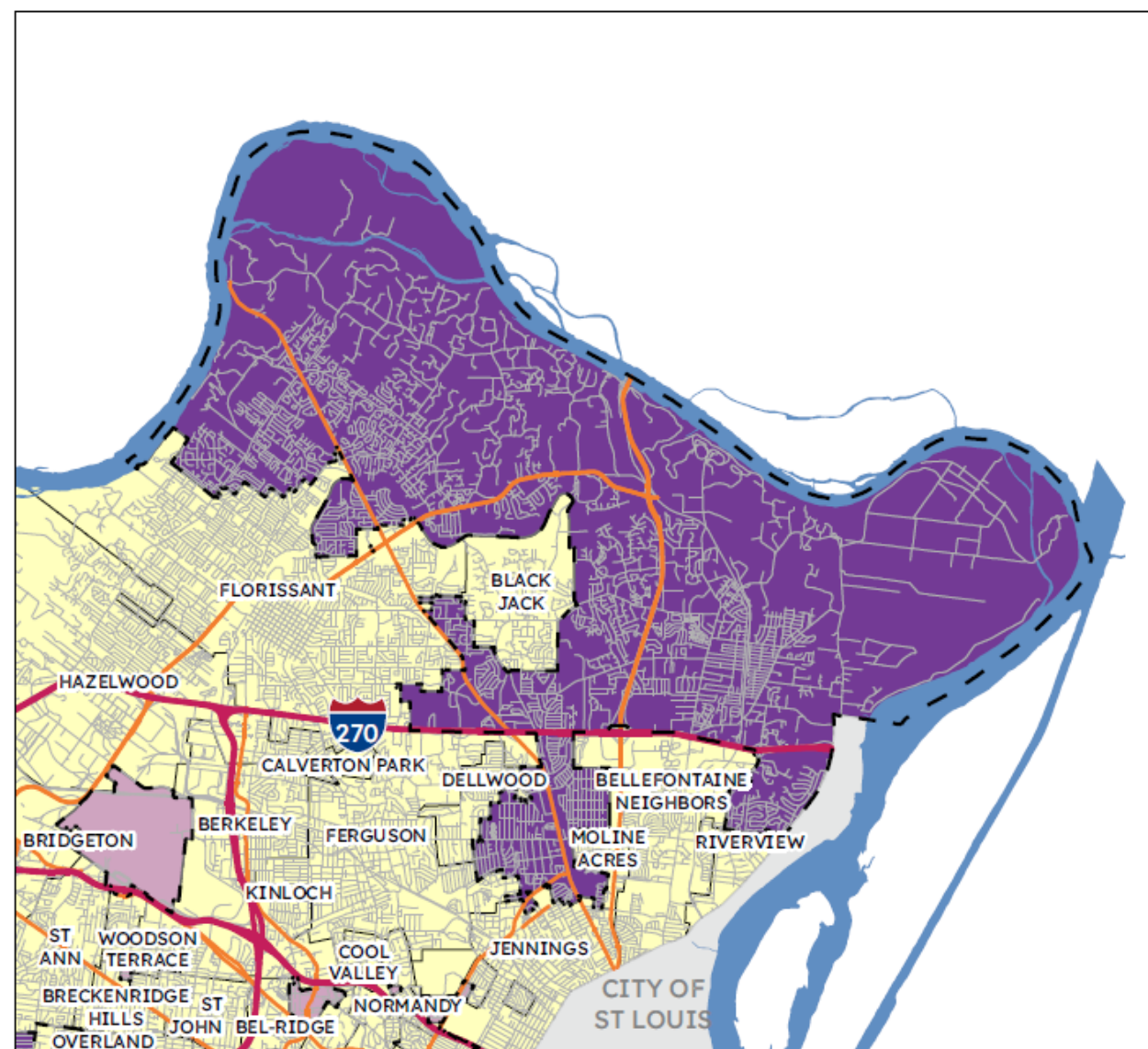
Jennings

Ferguson

Dellwood

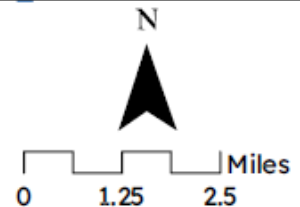
Black Jack

Florissant



- Interstate Highways
- Major Roads
- Streets
- Rivers
- City of St. Louis
- Municipalities

- Proposed Established Unincorporated Areas
- Unincorporated Areas with a population below 2,500 for which the County will continue service delivery



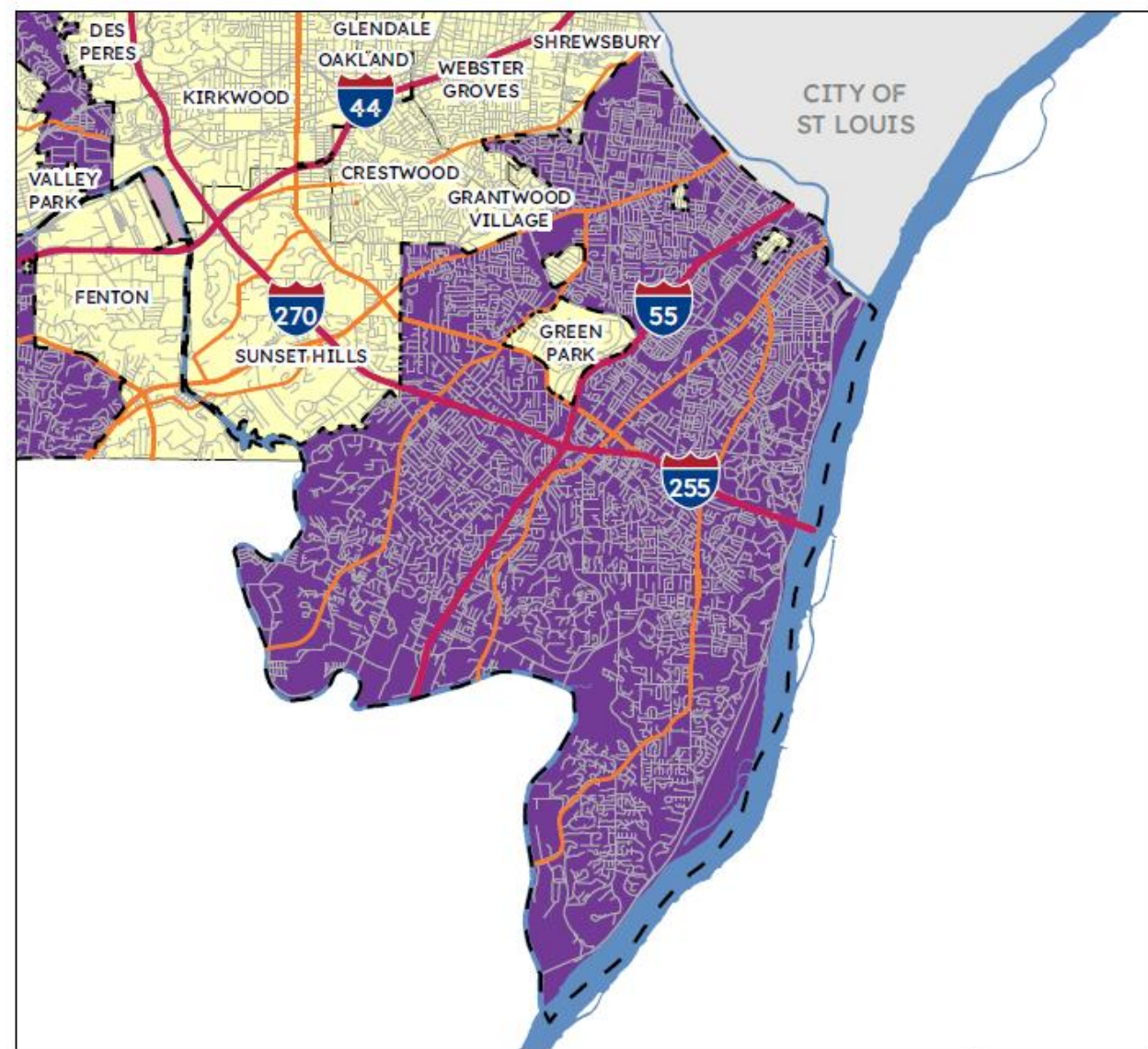
Boundaries as of April 24, 2024

Created by: St. Louis County Planning Department

St. Louis County South

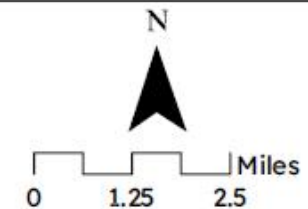
Municipalities bordering unincorporated County include:

- Green Park**
- Lakeshire**
- Sunset Hills**
- Bella Villa**
- Grantwood Village**
- Marlborough**
- Shrewsbury**
- Webster Groves**



- Interstate Highways
- Major Roads
- Streets
- Rivers
- City of St. Louis
- Municipalities

- Proposed Established Unincorporated Areas
- Unincorporated Areas with a population below 2,500 for which the County will continue service delivery



Boundaries as of April 24, 2024

Created by: St. Louis County Planning Department

St. Louis County

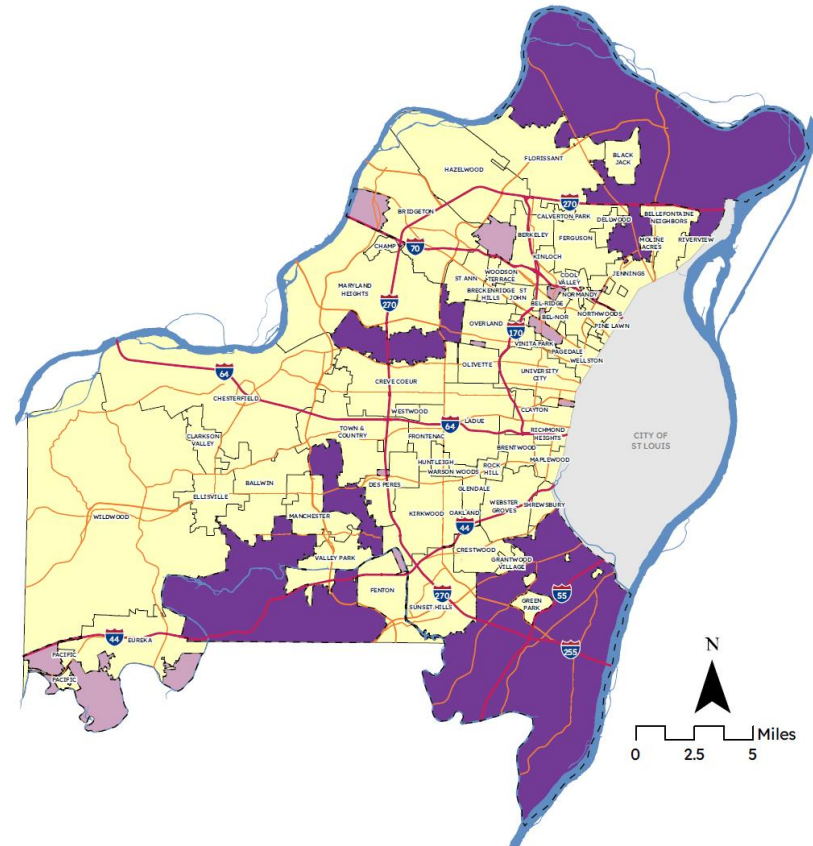
Serving its Unincorporated Residents




SAINT LOUIS COUNTY
Missouri

Saint Louis County: A Unique Service Provider

- The County provides countywide services to all ~1 million residents.
- Local services to ~320,000 unincorporated residents.
- The County contracts with 90% of municipalities to provide specialized services.
- A service philosophy based on direct contact with professional staff.



Saint Louis County: Complete Provider of Local Services

- Police Services
 - Street & Bridge Maintenance
 - Snow Removal
 - Sidewalk Improvement and Repair
 - Parks and Recreation
 - Refuse Collection, Recycling, Yard Waste Management
 - Municipal Court
 - Planning, Zoning, and Subdivision Regulation
 - Building Code, Mechanical Permits, Inspections
 - Occupancy Permits and Inspections
 - Sewer Lateral and Water Line Repair
 - Health and Human Services, including Vector Control and Animal Control
- 

St. Louis County has the Largest and Highest-Capacity Law Enforcement Agency in the Region

- County Police is accredited by the Commission on Accreditation for Law Enforcement Agencies (CALEA)
- County Police is one of only 21 law enforcement agencies in the U.S. with the Tri-ARC Award designation for accredited police division, police academy, and communications division.
- The County employs >1,200 officers and >300 staff members.



County services are most effective at scale

- Trash, recycling, and yard waste services provided to residents of unincorporated County
- Competitive prices that are among the most affordable in the region.
- **In contiguous Unincorporated areas, the County is able to maximize route efficiency, and reduce wear and tear on the local road network.**



County services are most effective at scale



- Saint Louis County is one of the largest providers of road services in Missouri.
- Saint Louis County maintains more than 3,100 lane miles of pavement and 180 bridges via repairs, sidewalk improvements, snow removal, etc.

Annexations may have negative impacts on St. Louis County's ability to provide services to its unincorporated residents

- Increased fragmentation of the County's unincorporated areas adds cost to service provision.
- Annexation, especially of commercial and industrial areas, erodes the tax base and strains the ability to provide services.
- Annexations reduce the economy of scale that helps the County provide services at such a low cost.



Thank You



SAINT LOUIS COUNTY
Missouri