



city of **CREVE COEUR**

---

300 North New Ballas Road • Creve Coeur, Missouri 63141  
(314) 432-6000 • Fax (314) 872-2539 • Relay MO 1-800-735-2966  
[www.creve-coeur.org](http://www.creve-coeur.org)

May 30, 2024

St. Louis County Boundary Commission  
225 South Meramec Avenue, Suite 8211  
Clayton, MO 63105

**RE: CITY OF CREVE COEUR MAP PLAN**

Dear Boundary Commission,

Enclosed is the official Map Plan for the City of Creve Coeur, in conformance with Section 72.423 RSMo. A sealed copy of Resolution No. 1725, adopted on May 13, 2024, and the required copies of the map are also enclosed.

Mark Perkins, City Administrator, will act on behalf of Creve Coeur regarding this submittal. I believe it meets all the requirements of the statute as well as the rules of the Boundary Commission.

If you have any questions regarding this submittal, please contact Mr. Perkins at 314-872-2511 or [mperkins@crevecoeurmo.gov](mailto:mperkins@crevecoeurmo.gov)

Thank you for your consideration.

Sincerely,

CITY OF CREVE COEUR

Robert Hoffman  
Mayor

Enclosures

RESOLUTION NO. 1725

**A RESOLUTION OF THE CITY OF CREVE COEUR TO SUBMIT AN ANNEXATION MAP PLAN TO THE ST. LOUIS COUNTY BOUNDARY COMMISSION FOR THE NEXT FIVE-YEAR PLANNING CYCLE FOR POTENTIAL BOUNDARY CHANGES**

**WHEREAS**, the St. Louis County Boundary Commission had developed a five-year planning cycle for all potential boundary changes within the unincorporated areas of St. Louis County; and

**WHEREAS**, the St. Louis County Boundary Commission has advised that all cities must submit a Map Plan to said Commission by July 1, 2024 in order to have any consideration for annexation in the next five years; and

**WHEREAS**, the Planning and Zoning Commission reviewed and, by a 5-0 vote, recommended approval of the attached Map Plan, at its meeting on May 6, 2024; and

**WHEREAS**, the attached Map Plan outlines the maximum boundaries that the City may consider annexing by the year 2030 and does not bind the City in any way,

**NOW, THEREFORE**, be it resolved by the City Council of the City of Creve Coeur, St. Louis County, Missouri, as follows:

**Section 1:** The City Council hereby approves the attached Map Plan for submission to the St. Louis County Boundary Commission.

**Section 2:** This Resolution shall take effect immediately upon its adoption.

ADOPTED THIS 13<sup>th</sup> DAY OF MAY 2024.



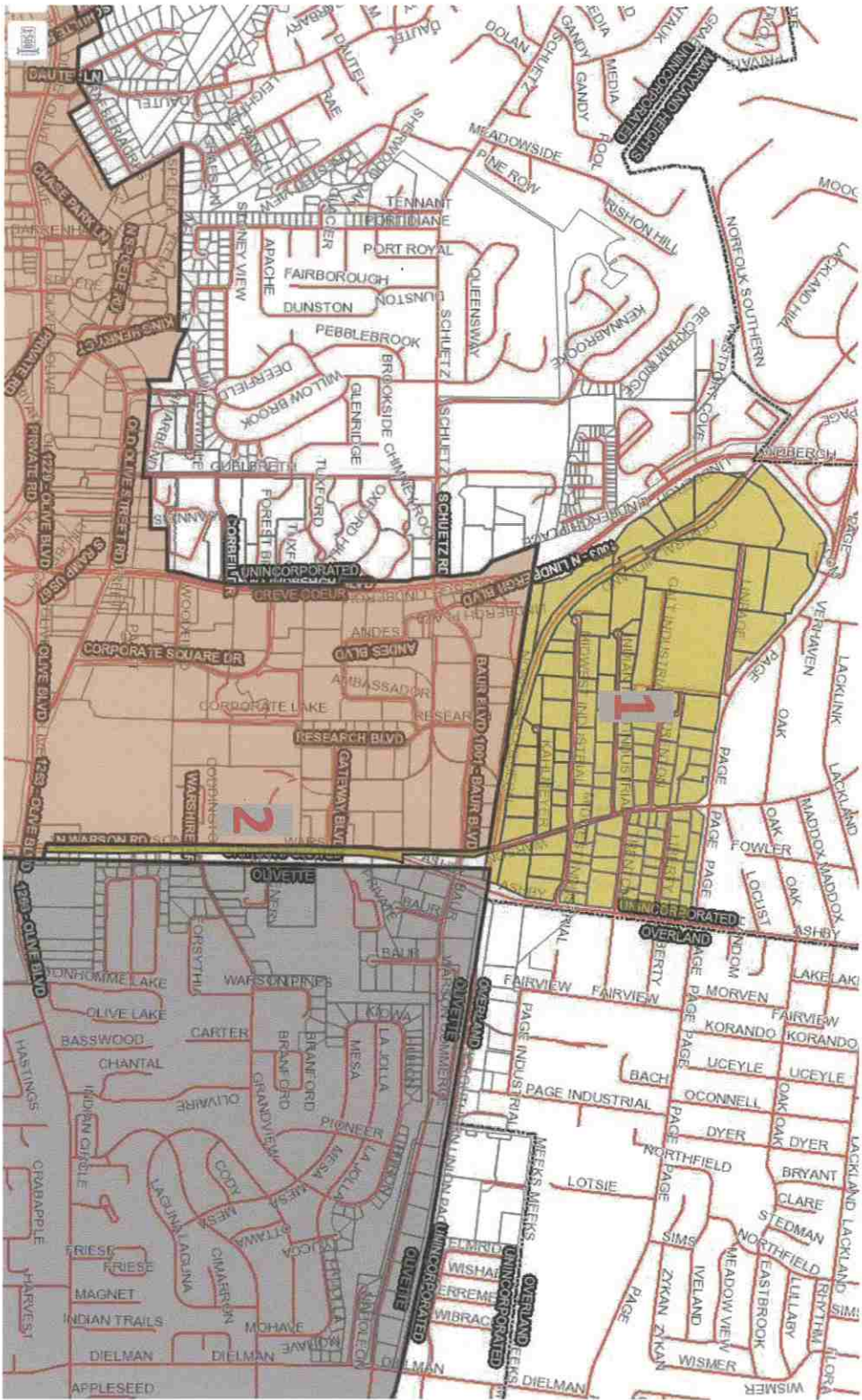
DR. ROBERT HOFFMAN  
MAYOR

ATTEST:



KELLIE HENKE  
CITY CLERK





City of Creve Coeur 2024 Map Plan



**City of Creve Coeur 2024 Map Plan**




**Close up of Annexation Area #2**

STATE OF MISSOURI                    )  
  )SS  
COUNTY OF ST. LOUIS                )

I, Sharon Stott, Acting City Clerk within and for the City of Creve Coeur, in the State of Missouri and County aforesaid, do hereby certify that the forgoing constitutes a full, true and correct copy of Resolution No. 1725 of said city as approved by the City Council and signed by the Mayor, and is in effect for the City of Creve Coeur, MO, on the 13<sup>th</sup> day of May, 2024, and as fully as the same appears on record in my office.

IN WITNESS WHEREOF, I have hereunto set my hand and affixed the corporate seal of the City of Creve Coeur, Missouri, at my office, this 30<sup>th</sup> day of May, 2024.



  
\_\_\_\_\_  
Sharon Stott  
Acting City Clerk