



690 Chesterfield Pkwy W • Chesterfield MO 63017-0760  
Phone: 636-537-4000 • Fax 636-537-4798 • www.chesterfield.mo.us

March 6, 2024

St. Louis County Boundary Commission  
Attn: Michelle Dougherty, Executive Director  
168 N. Meramec Avenue, Suite 140  
Clayton, Missouri 63105

Subject: City of Chesterfield Map Plan

Dear Boundary Commission,

Pursuant to the regulations for annexation set forth by Sections 72.400 to 72.430 RSMo, the City of Chesterfield is hereby transmitting its 2024 Map Plan to the St. Louis County Boundary Commission, providing for proposed boundary changes for the period of January 1, 2024 to July 1, 2024.

The City further certifies that the attached map plan represents the City of Chesterfield's official map plan proposal in conformance with the requirements set forth in RSMo §72.423.

The City of Chesterfield designates the following administrative representative as the contact person who has the authority to act on its behalf regarding this map plan and other matters related to the annexation proposal:

Michael O. Geisel  
City Administrator  
City of Chesterfield  
690 Chesterfield Parkway West  
Chesterfield, MO 63017  
(636) 537-4000

If you should have any questions regarding this submittal, please feel free to contact Mr. Geisel.

Sincerely,

Bob Nation  
Mayor

Enclosures



---

690 Chesterfield Pkwy W • Chesterfield MO 63017-0760  
Phone: 636-537-4000 • Fax 636-537-4798 • www.chesterfield.mo.us

---

I, Vickie McGownd, City Clerk for the City of Chesterfield, do hereby certify that the document attached hereto is a full, true and correct copy of Resolution No. 494 passed by City Council on January 2, 2024, at an official meeting of said City Council. I further certify that the signatures contained therein are genuine signatures of persons authorized to act on behalf of the City of Chesterfield.

In witness whereof, I have hereunto set my hand as City Clerk this 29<sup>th</sup> day of January, 2024.



Vickie McGownd  
Vickie McGownd, City Clerk

RESOLUTION NO. 494

**A RESOLUTION BY THE CITY OF CHESTERFIELD AUTHORIZING THE CITY ADMINISTRATOR TO FILE WITH THE BOUNDARY COMMISSION OF ST. LOUIS COUNTY A MAP PLAN IDENTIFYING THE LIMITS OF ANY POTENTIAL BOUNDARY CHANGES THAT MAY OCCUR DURING THE UPCOMING FIVE-YEAR PLANNING CYCLE ESTABLISHED BY THE BOUNDARY COMMISSION.**

**WHEREAS**, pursuant to Section 72.423 of the Revised Statutes of Missouri, there is established a five (5) year planning cycle for all municipalities to conduct annexation activities and stipulates that certain guidelines must be met within this five (5) year timeframe;

**WHEREAS**, in the period between January 1, 2024 to July 1, 2024, municipalities may present to the Boundary Commission of St. Louis County Map Plans of potential boundary changes for review; and

**WHEREAS**, the submission of a Map Plan does not obligate such municipality to pursue such a boundary change; and

**WHEREAS**, the City of Chesterfield wishes to file a Map Plan submission for future potential boundary changes;

**NOW, THEREFORE, BE IT RESOLVED BY THE CITY COUNCIL OF THE CITY OF CHESTERFIELD, MISSOURI AS FOLLOWS:**

**Section 1.** That the City Administrator of the City of Chesterfield is authorized to file with the Boundary Commission of St. Louis County the Map Plan attached hereto as Exhibit A. Said Map Plan shall be filed on or before July 1, 2024.

**Section 2.** That this Map Plan represents the City of Chesterfield's official Map Plan in conformance with the requirements of Section 72.423 of the Revised Statutes of Missouri.

Passed and approved by the City Council of the City of Chesterfield, Missouri this 2<sup>nd</sup> day of January, 2024.

Bob Nation  
PRESIDING OFFICER

Bob Nation  
Bob Nation, MAYOR

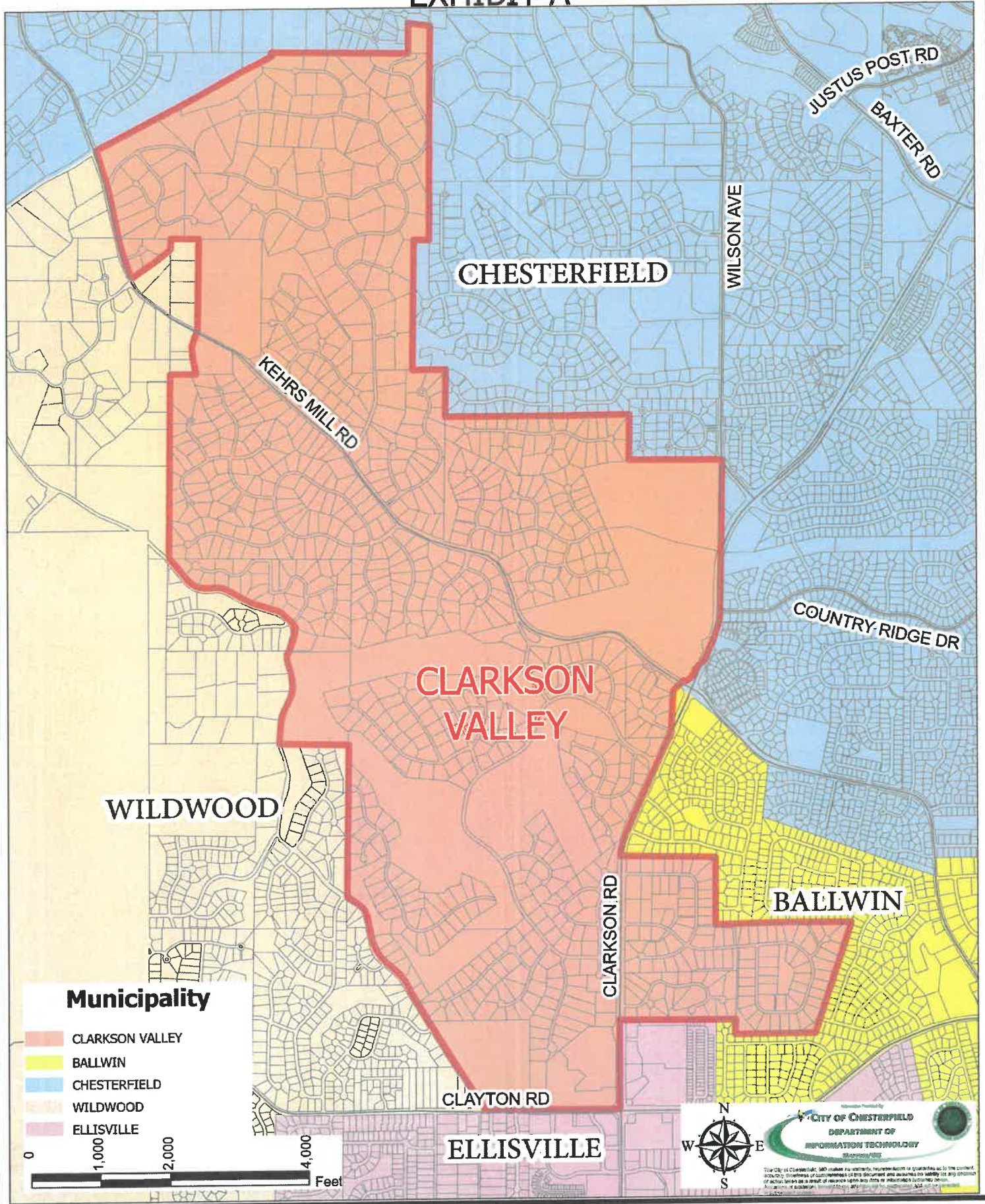
ATTEST:  
Vickie McGownd  
Vickie McGownd, City Clerk

FIRST READING HELD:  
1/2/2024



# 2024 Chesterfield Map Plan for Clarkson Valley

## EXHIBIT A





## Memorandum Department of Planning

**To:** Michael O. Geisel, City Administrator  
**From:** Justin Wyse, Director of Planning *JW*  
**Date:** January 2, 2024  
**RE:** **St. Louis Boundary Commission-Map Plan Submittal**



---

The Boundary Commission is responsible for review of all proposals affecting boundaries of incorporated and unincorporated areas within St. Louis County. Most boundary changes are required to be approved by the Boundary Commission, as well as, be approved by the voters in the impacted areas.

Sections 72.400-72.423 of the Revised Missouri Statutes dictate the authority and activities of the Boundary Commission. The statute establishes a six-year cycle that includes a *Map Plan* phase and a *Proposal* phase. We are currently are entering the Map Plan phase which begins January 1, 2024 and lasts until July 1, 2024. Submission of a municipality's Map Plan serves to reserve the right to pursue annexation during the Proposal phase. No jurisdiction can pursue annexation proposals unless the proposal is within the map plan boundaries. The window opens every six years and in 2018 the City of Chesterfield filed a map plan for Clarkson Valley to reserve its right if the City determined that it would seek annexation. A new window opens again January 1. Therefore, if the City has interest in contemplating boundary changes in the next six (6) years, a submittal must be provided to the Boundary Commission prior to July 1, 2024. Submission of a Map Plan does not obligate a City to pursue annexation. However, lack of a submission does preclude the ability for changes until the next Map Plan phase begins, which here is January 1, 2030.




We are again seeking to submit a Map Plan for the possible future annexation of Clarkson Valley. To proceed in this planning cycle, City Council must again adopt a resolution and submit the Map Plan to the Boundary Commission. This item was brought to the Planning and Public Works Committee on December 7, 2023 for review and recommendation to the City Council. The Committee voted 4-0 to recommend approval by City Council. Attached to this report, please find a copy of the necessary Resolution and the proposed City of Chesterfield Map Plan for Clarkson Valley.

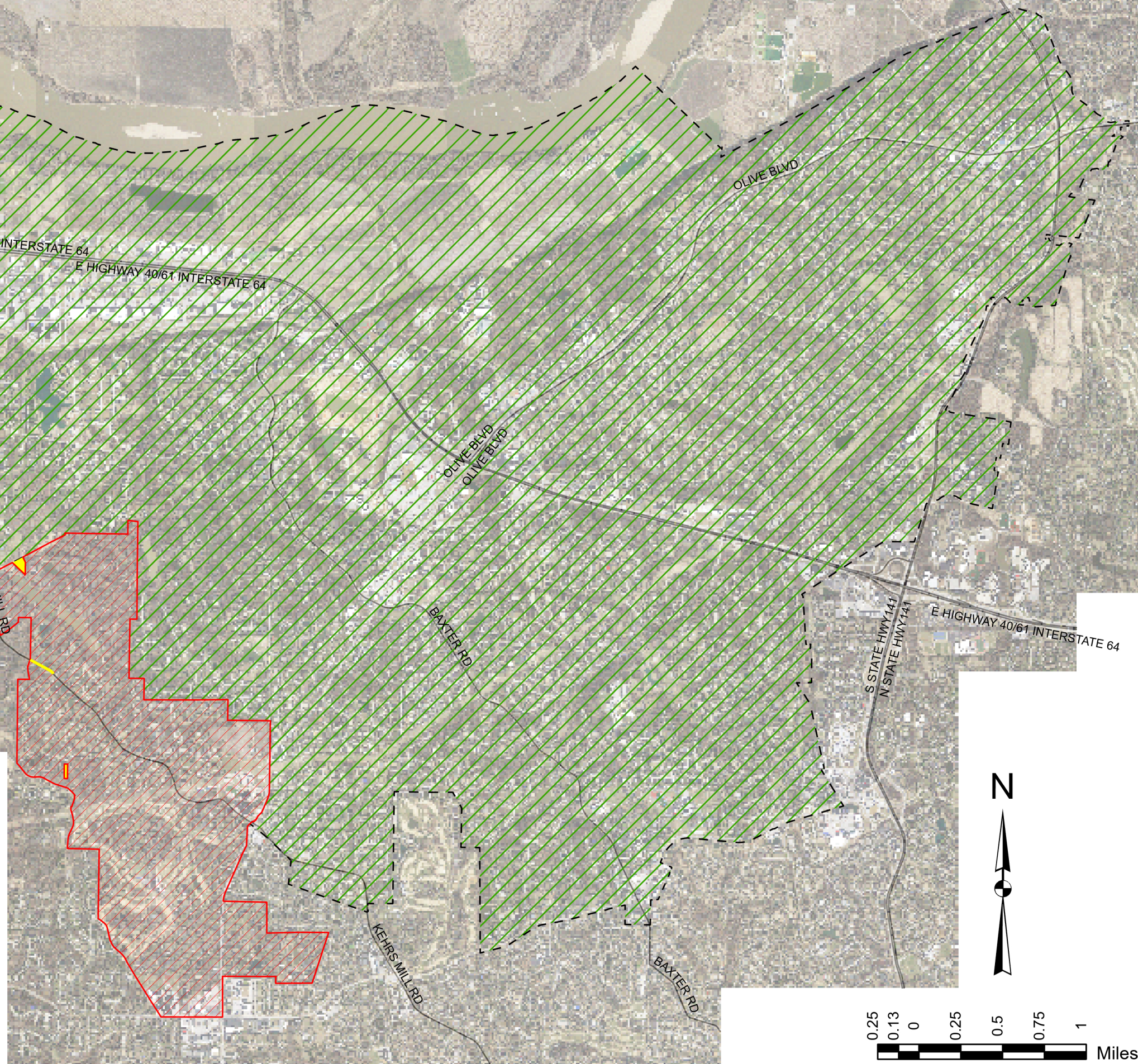
Attachments: Draft Resolution  
Proposed City of Chesterfield Map Plan for Clarkson Valley.



# CITY OF CHESTERFIELD, MO ANNEXATION MAP 2024

## LEGEND

-  CHESTERFIELD CITY LIMITS
-  CLARKSON VALLEY (PROPOSED ANNEXATION)
-  UNINCORPORATED ST. LOUIS COUNTY (PROPOSED ANNEXATION)





## **St. Louis County Unincorporated Areas:**

The proposed map plan includes the boundary of the Clarkson Valley and three unincorporated St. Louis County areas. Two of the unincorporated St. Louis County areas are vacant land and grave yard totaling 3.69 acres, and one area is the portion of the Right of Way of St. Louis County Road, Kehrs Mill. Including these unincorporated areas will not impact the nearby surrounding, and to better serve these areas with services, it is advisable to include them in the proposed map plan. Below are the figures that shows all the unincorporated areas in yellow.



*Figure 1: Unincorporated vacant land north of Saddle Creek Road*



*Figure 2: Unincorporated grave yard east of Ridgley Woods Drive*





Figure 3: Unincorporated Right of Way (Kehrs Mill Road)