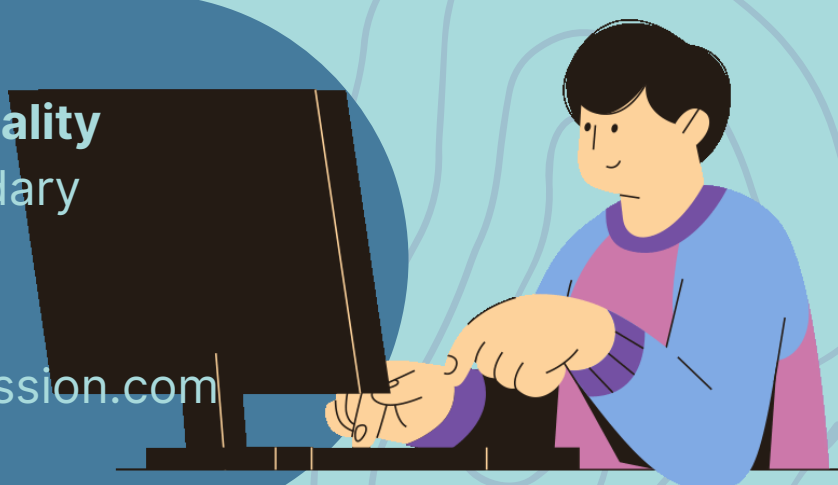


5 Steps to submit your Map Plan to the St. Louis County Boundary Commission

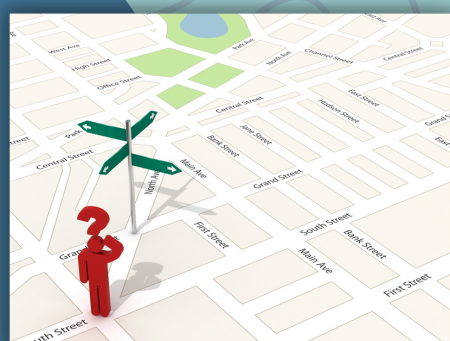
1 Register for a **Municipality Account** on the Boundary Commission [website](#). Register by emailing Info@boundarycommission.com



2 Between January 1, 2024 and July 1, 2024 upload your Map Plan to the website. 13 Hard Copies of your Map Plan must also be sent to the Commission's offices before July 1, 2024.

Your Map Plan must Include: 1) a map of sufficient detail to Indicate clearly which parcels of land are affected by the proposed boundaries & how rights of way are affected; 2) a transmittal letter with the official name of the party submitting the Map Plan, who is the designated contact person, and a certification that it represents the party's official Map Plan.

3



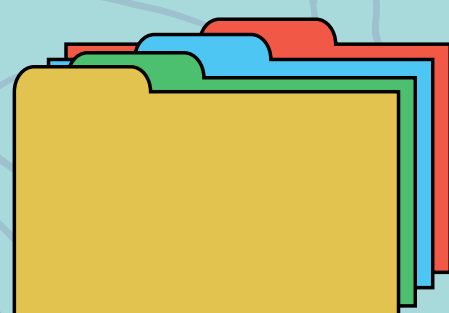
4



Between August and November, informational public hearings will be held on the Map Plans with presentations by the Cities & St. Louis County. Be on the lookout for correspondence from the Commission for details.

5

The Map Plan as submitted (or amended) by April 15, 2025 shall be on file at the Commission and shall be the limit of permissible boundary change proposals until the next map plan cycle in 2030.



More details about the Map Plan process can be found [here](#) and on page 10 of the Commission's [Rules](#).