



10405 ST. CHARLES ROCK ROAD, ST. ANN, MO 63074

TELEPHONE: 314-427-8009

FAX: 314-427-1084

WEBSITE: [www.stannmo.org](http://www.stannmo.org)

ALDERMEN

WARD 1

Donald Aldenderfer

Ross Mulligan

WARD 2

Renee Goellner-Grant

Amy Poelker

WARD 3

Rick Crabtree

June Deering

WARD 4

Leo McGeoghegan

Sherry Hoffman

WARD 5

Iven Sparks

Daniel Murphy

June 28, 2012

St. Louis County Boundary Commission  
168 N. Meramec  
Suite 140  
Clayton, MO 63105

RE: Letter of Transmittal – City of St. Ann Map Plan

To Whom It May Concern:

Enclosed, you will find 12 hard copies of City of St. Ann's Map Plan and CD-ROM containing the companion digital files. Additionally, you will find a certified copy of Ordinance 2788 directing the submittal of the Map Plan to the Boundary Commission. Per the Ordinance, I have authority to act on the City's behalf regarding the submittal of the Map Plan.

Should you require any further information, please feel free to contact me at 314-428-6801 or by email at [mconley@stannmo.org](mailto:mconley@stannmo.org).

Sincerely,

Matthew K. Conley  
City Administrator/City Clerk

Attachments



10405 ST. CHARLES ROCK ROAD, ST. ANN, MO 63074

TELEPHONE: 314-427-8009

FAX: 314-427-1084

WEBSITE: [www.stannmo.org](http://www.stannmo.org)

MAYOR  
Michael G. Corcoran

ALDERMEN

WARD 1

Donald Aldenderfer

Ross Mulligan

WARD 2

Renee Goellner-Grant

Amy Poelker

WARD 3

Rick Crabtree

June Deering

WARD 4

Leo McGeoghegan

Sherry Hoffman

WARD 5

Iven Sparks

Daniel Murphy

I, Christina J. Rogers, Deputy City Clerk of the said City of St. Ann, Missouri, do hereby certify that the attached constitutes a full, true and correct copy of the following documents of the City of St. Ann Municipal Code, as fully as same appears on the records in my office.

**Ordinance No. 2788**

**AN ORDINANCE OF THE CITY OF ST. ANN, MISSOURI,  
AUTHORIZING THE CITY ADMINISTRATOR TO SUBMIT A MAP PLAN  
TO THE ST. LOUIS COUNTY BOUNDARY COMMISSION.**

IN WITNESS WHEREOF I have hereunto set my hand and affixed the official seal of the City of St. Ann, Missouri, this 27<sup>th</sup> day of June, 2012.

Christina J. Rogers  
Deputy City Clerk

First reading: 6-25-2012  
Second reading: 6-25-2012

Introduced by Mayor Corcoran

Bill No. 2876

Ordinance No. 2788

**AN ORDINANCE OF THE CITY OF ST. ANN, MISSOURI, AUTHORIZING THE CITY  
ADMINISTRATOR TO SUBMITT A MAP PLAN TO THE ST. LOUIS COUNTY  
BOUNDARY COMMISSION .**

**BE IT ORDAINED BY THE BOARD OF ALDERMEN FOR THE CITY OF ST. ANN,  
MISSOURI, AS FOLLOWS:**

Section 1.

The City Administrator is hereby authorized to submit the Map Plan attached hereto as Exhibit "A"

Section 2.

This Ordinance shall take effect and be in full force immediately following its passage and being signed as provided by law.

Passed by the Board of Aldermen for the City of St. Ann, Missouri, this 25<sup>th</sup> day of June, 2012.

Michael H Corcoran  
Presiding Officer

Attest:

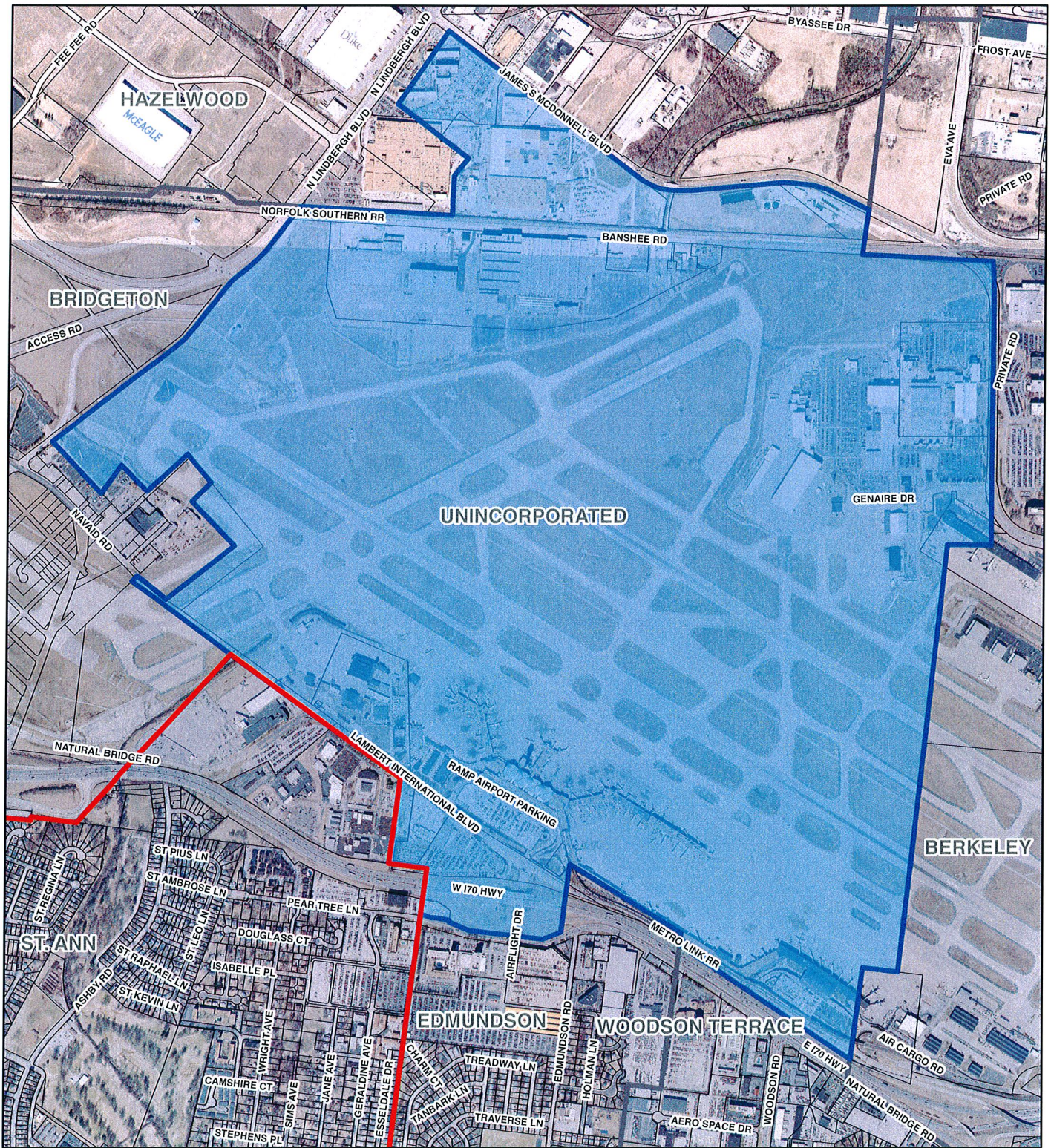
[Signature]  
City Clerk

Signed this 27<sup>th</sup> day of June, 2012.

Michael H Corcoran  
Michael G. Corcoran  
Mayor, City of St. Ann

Attest:

[Signature]  
City Clerk



## St. Ann Annexation Map Plan

### Legend

St. Ann Municipal Limits

Unincorporated Area to be Annexed

June 2012

0      750      1,500      3,000  
Feet