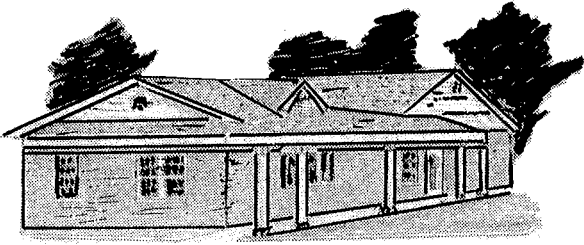


VILLAGE OF RIVERVIEW



JUN 27 2000
DJK

9699 LILAC DRIVE
ST. LOUIS, MO 63137
868-0700 • 868-0701
FAX: 314-868-3252

June 23, 2000

St. Louis County Boundary Commission
41 North Central Avenue
Clayton, MO 63105

Dear Boundary Commission:

Pursuant to the regulations for annexation promulgated by the St. Louis County Boundary Commission, the Village of Riverview is hereby transmitting the required map plan for the portion of unincorporated territory in St. Louis County.

The Village further certifies that the attached map represents Riverview's official map plan proposal in conformance with the requirements set forth in RSMo 72.423.

Furthermore, the Chief Elected Official of the Village of Riverview designates the following administrative representative as the contact person who has the authority to act on Riverview's behalf regarding this map plan and other matters related to the annexation proposal:

Chairman Steve Paro
Riverview Village Hall
9699 Lilac Drive
Riverview, MO 63137
(314) 868-0700

If you have any questions regarding the attached map and/or this transmission, please contact the above named person or Donna Forrest, Village Clerk.

Sincerely,

A handwritten signature in black ink that reads "Steve Paro".

Steve Paro
Chairman, Board of Trustees

RESOLUTION

WHEREAS, the Village of Riverview desires to consider annexation of certain unincorporated territory in St. Louis County contiguous to the Village as hereinafter described;

NOW, THEREFORE, BE IT RESOLVED BY THE BOARD OF TRUSTEES OF THE VILLAGE OF RIVERVIEW, MISSOURI, AS FOLLOWS:

Section One.

The Board of Trustees, upon due consideration, adopts the map plan attached hereto as Exhibit A and incorporated herein by this reference as the plan of the Village of Riverview for annexation of territory located in unincorporated St. Louis County for the current planning cycle as contemplated by Sections 72.400 to 72.433, RSMo. The area to be depicted on the map and intended to be encompassed by this Resolution shall include all unincorporated territory in St. Louis County lying north of the present Village limits and east of the western right of way line of Highway 367.

Section Two.

The map submitted is consistent with the Proposed Rules of the Boundary Commission and Sections 72.400 to 72.433, RSMo.

Section Three.

The Chairman of the Board of Trustees of the Village of Riverview is hereby authorized and directed to submit such Map Plan to the St. Louis County Boundary Commission for the annexation of the aforesaid territory located in unincorporated St. Louis County.

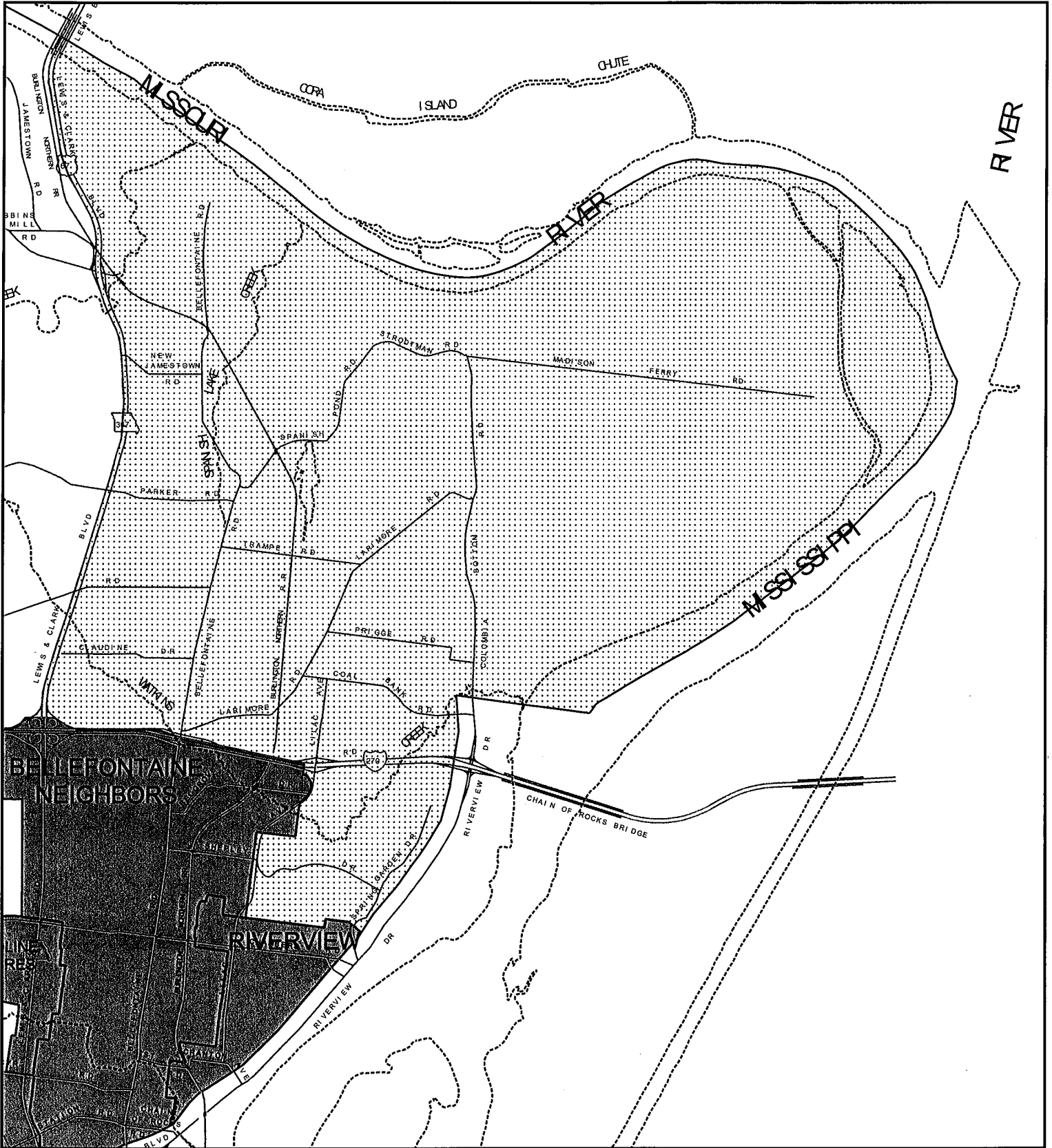
PASSED BY THE BOARD OF TRUSTEES OF THE VILLAGE OF RIVERVIEW MISSOURI, THIS 22nd DAY OF June, 2000.


Steve Paro, Chairman


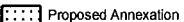

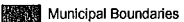
Attest:


Village Clerk

Map Plan Submission - City of Riverview



Legend

-  Major Roads
-  Proposed Annexation
-  Unincorporated Areas
-  Municipal Boundaries

