

June 25, 2012

Ms. Michelle Dougherty, Executive Director
St. Louis County Boundary Commission
168 N. Meramec Ave., Suite 140
Clayton, MO 63105

Re: Ballwin 2012 Map Plan Submission

Dear Ms. Dougherty:

The City of Ballwin hereby submits its 2012 Annexation Map Plan to the St. Louis County Boundary Commission. The areas identified in Ballwin's map plan include several small unincorporated pockets and a large unincorporated area adjacent the City. These are highlighted in the detail on the enclosed map documents.

As of the date of this letter, no time frame or geographical sequence plan has been developed to accomplish the annexation of these areas. Such decisions cannot be made at this time. These issues must remain open pending an expression of interest in annexation and the completion of fiscal and service provision feasibility analyses.

Also enclosed with this letter is a copy of Ballwin Ordinance 12-27 authorizing the submission of the annexation map plan.

The contact people with the City of Ballwin relative to all issues of annexation shall be:

Robert Kuntz, City Administrator, 14811 Manchester Rd., Ballwin, MO, 63011, 636-227-8580,
rkuntz@ballwin.mo.us,

Thomas H. Aiken, Assistant City Administrator/City Planner, 14811 Manchester Rd., Ballwin, MO., 63011, 636-227-2243, taiken@ballwin.mo.us

Should there be any questions or the need of any additional information, please do not hesitate to contact Mr. Kuntz or me.

Sincerely:



Thomas H. Aiken, AICP
Assistant City Administrator/City Planner

CITY OF BALLWIN

14811 Manchester Road
Ballwin, MO 63011
(636) 227-8580

DOCUMENT CERTIFICATION


STATE OF MISSOURI)
COUNTY OF ST. LOUIS) SS.
CITY OF BALLWIN)

TO ALL OF WHOM THESE PRESENT SHALL COME:

I, Thomas H. Aiken, Deputy City clerk of the City of Ballwin, State of Missouri, do certify that the annexed pages contain a full, true and complete copy of Ordinance 12-27 of the City of Ballwin as the same appears on file and of record in this office.

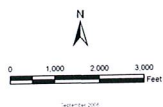
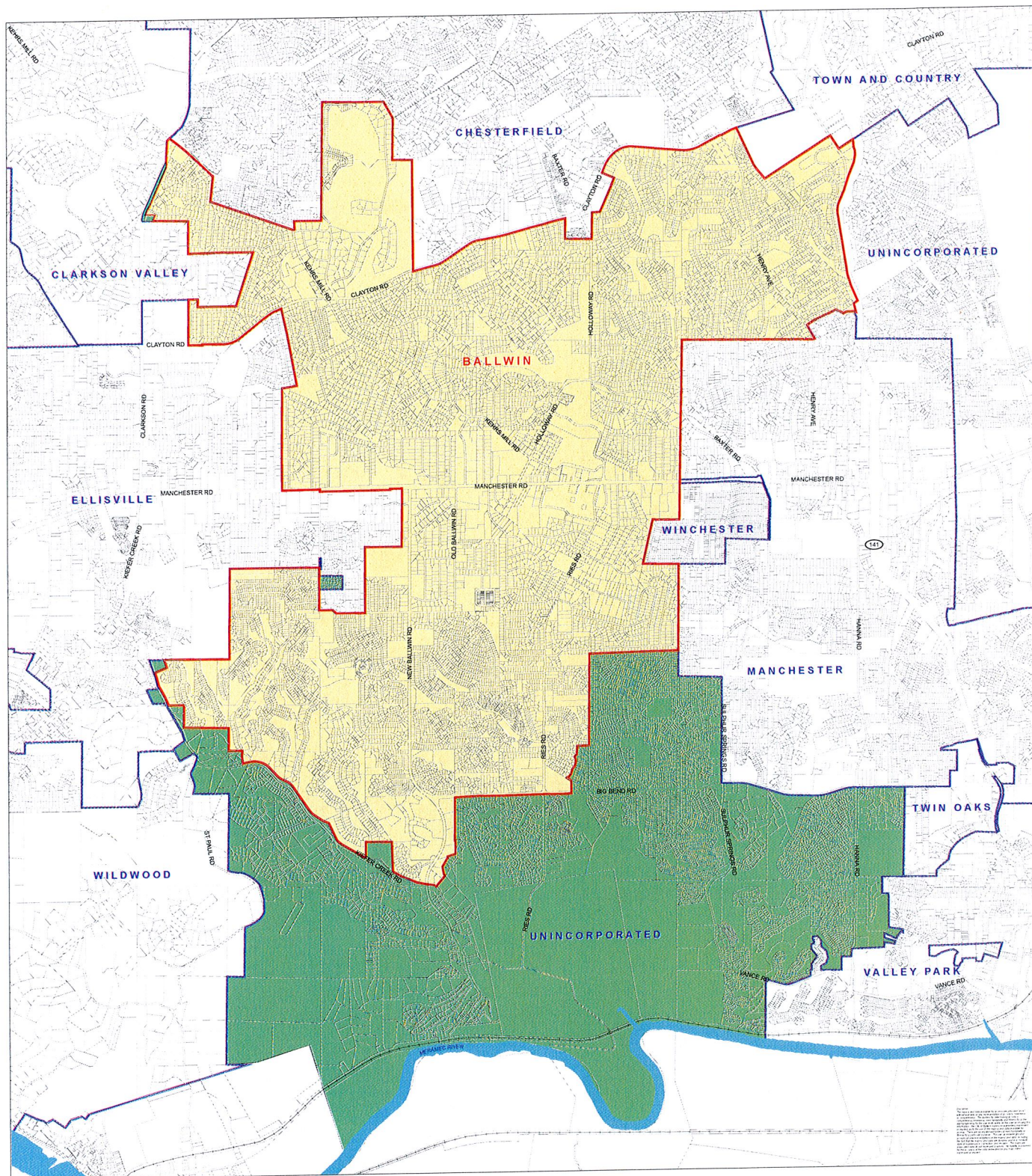
IN TESTIMONY WHEREOF, I hereunto set my hand and affixed the seal of the City of Ballwin this 21st day of June 2012.

SEAL



Thomas H. Aiken, AICP
Deputy City Clerk

CITY OF BALLWIN 2012 OFFICIAL ANNEXATION MAP PLAN

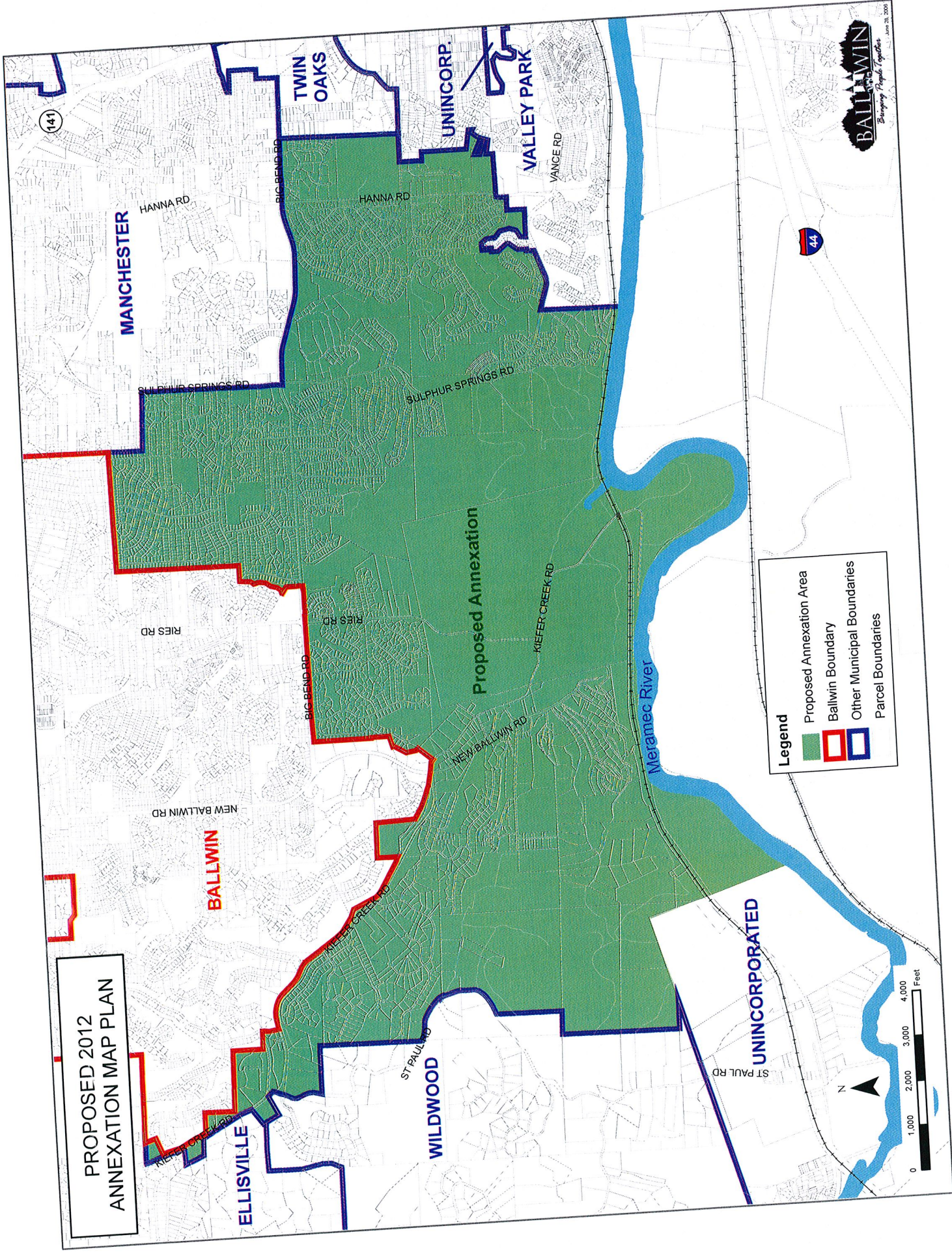


- Proposed Annexation
- Ballwin Boundary
- Other Municipal Boundaries



Map prepared by the City of Ballwin, Missouri, in 2012. The map shows the current and proposed boundaries of the City of Ballwin. The map is for informational purposes only and does not constitute a legal document. The City of Ballwin is not responsible for any errors or omissions on this map. The City of Ballwin is not responsible for any damages or liabilities arising from the use of this map. The City of Ballwin is not responsible for any changes to the map after the date of publication.

**PROPOSED 2012
ANNEXATION MAP PLAN**



Legend

- Proposed Annexation Area (Green box)
- Ballwin Boundary (Red box)
- Other Municipal Boundaries (Blue box)
- Parcel Boundaries (Thin grey lines)





June 20, 2009

PROPOSED 2012 ANNEXATION MAP PLAN

- Legend**
- Proposed Annexation
 - Parcel Boundaries
 - Ballwin Boundary
 - Other Municipal Boundaries

