



City of Manchester
14318 Manchester Road
Manchester, Missouri 63011

(636) 227-1385

June 22, 2018

St. Louis County Boundary Commission
Attn: Michelle Dougherty, Executive Director
168 N. Meramec Avenue, Suite 140
Clayton, MO 63105

Subject: City of Manchester Map Plan

Dear Boundary Commission:

Pursuant to the regulations for annexation set forth by Sections 72.400 to 72.430 RSMo, the City of Manchester is hereby transmitting its 2018 Map Plan to the St. Louis County Boundary Commission, providing the proposed boundary changes for the period of July 1, 2018 to July 1, 2024.

The City further certifies that the attached map plan represents the City of Manchester's official map plan proposal in conformance with the requirements set forth in RSMo 72.423.

The City of Manchester designates the following administrative representative as the contact person who has the authority to act on its behalf regarding this map plan and other matters related to the annexation proposal:

Lawrence Perney
City Administrator
City of Manchester
14318 Manchester Road
Manchester, MO 63011
(636) 227-1385, ext. 110

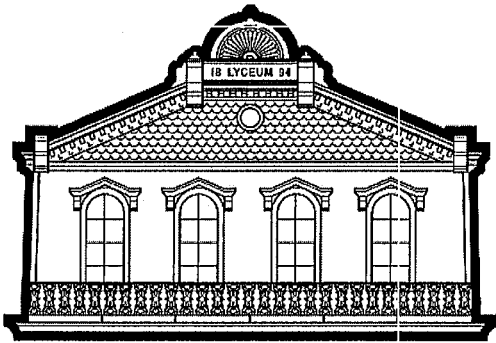
If you should have any questions regarding this submittal, please feel free to contact Mr. Perney.

Sincerely,

A handwritten signature in black ink that reads "Mike Clement". The signature is written in a cursive style.

Mike Clement
Mayor

Enclosures




THE CITY OF
MANCHESTER
MISSOURI

I, Ruth E. Baker, duly appointed City Clerk for the City of Manchester, County of St. Louis, State of Missouri, do hereby certify that the document attached hereto is a full, true and correct copy of Resolution # 18-0638 passed by the Board of Aldermen at an official meeting on June 18, 2018. I further certify that the signatures contained therein are genuine signatures of persons authorized to act on behalf of the City of Manchester.

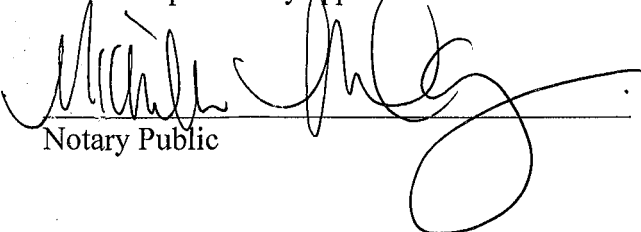
CERTIFIED THIS 22nd DAY OF June, 2018.

CITY OF MANCHESTER

By: 
Ruth E. Baker
City Clerk

STATE OF MISSOURI)
) ss:
COUNTY OF ST. LOUIS)

On this 22nd day of June, 2018, Ruth E. Baker personally appeared before me.


Notary Public



MICHELLE MELUGIN
My Commission Expires
June 22, 2021
Jefferson County
Commission #13404190

INTRODUCED BY ALDERMAN BAUMANN

RESOLUTION NO. 18-0638

A RESOLUTION BY THE CITY OF MANCHESTER AUTHORIZING THE CITY ADMINISTRATOR TO FILE WITH THE BOUNDARY COMMISSION OF ST. LOUIS COUNTY MAP PLANS IDENTIFYING THE LIMITS OF ANY POTENTIAL BOUNDARY CHANGES THAT MAY OCCUR DURING THE UPCOMING FIVE-YEAR PLANNING CYCLE ESTABLISHED BY THE BOUNDARY COMMISSION.

WHEREAS, pursuant to Section 72.423 of the Revised Statutes of Missouri, there is established a five (5) year planning cycle for all municipalities to conduct annexation activities and stipulates that certain guidelines must be met within this five (5) year timeframe; and,

WHEREAS, in the period between January 1, 2018 to July 1, 2018, municipalities may present to the Boundary Commission of St. Louis County Map Plans of potential boundary changes for review; and,

WHEREAS, the submission of Map Plans does not obligate such municipality to pursue such a boundary change; and,

WHEREAS, the City of Manchester wishes to file Map Plans submission for future potential boundary changes.


NOW, THEREFORE, BE IT RESOLVED BY THE BOARD OF ALDERMEN OF THE CITY OF MANCHESTER, STATE OF MISSOURI, AS FOLLOWS:

Section One: That the City Administrator of the City of Manchester is authorized to file with the Boundary Commission of St. Louis County the Map Plans attached hereto as Exhibit A. Said Map Plans shall be filed on or before July 1, 2018.

Section Two: That these Map Plans represent the City of Manchester's official Map Plans in conformance with the requirements of Section 72.423 of the Revised Statutes of Missouri.

PASSED AND APPROVED THIS 18TH DAY OF JUNE, 2018.

CITY OF MANCHESTER, MISSOURI

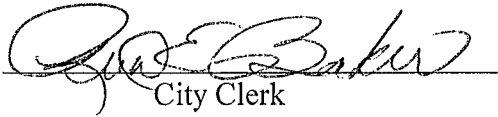


Mayor

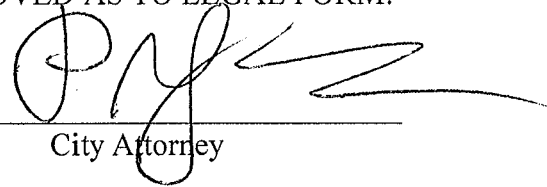
INTRODUCED BY ALDERMAN BAUMANN

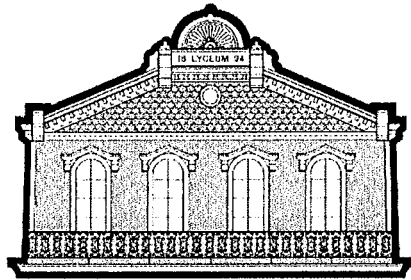
RESOLUTION NO. 18-0638

ATTEST:


City Clerk

APPROVED AS TO LEGAL FORM:


City Attorney



THE CITY OF
MANCHESTER
MISSOURI

MEMORANDUM

TO: Mayor and Board of Aldermen

FROM: Larry Perney, City Administrator

DATE: June 14, 2018

SUBJECT: Map Plans of Potential Boundary Changes

On Monday, June 18th, Board of Aldermen's agenda you will see a resolution authorizing me to file map plans of potential boundary changes to the St. Louis County Boundary. This memo is to give you some background on the resolution prior to Monday's meeting.

The St. Louis County Boundary Commission is responsible for the review of proposals affecting the boundaries of incorporated and unincorporated areas in St. Louis County Commission (See attached PDF for more information on the St. Louis County Boundary Commission).

Sections, 72.400-72.423 of the Revised Missouri Statutes dictate the authority and activities of the Boundary Commission. The Statute calls for a six-year cycle divided between the Map Plan phase and the Proposal phase. During the Map Plan phase, which includes the first year-and-a-quarter of the six years, local jurisdictions submit maps to the Commission. Local jurisdictions' Map Plans serve to reserve the right to pursue annexation and established unincorporated area proposals during the Proposal phase.

The new Map Plan/Proposal Cycle (2018 – 2023) has begun. Map Plans must be submitted by July 1, 2018. It does not mean that we are or have to pursue annexation just that we reserve the right to, if we decide to. If we do not, then we have no option to annex for the duration of this cycle. I think it is prudent for the City of Manchester to submit a map, even if we have no intention or thoughts of

annexation. You just never know what might happen and it will be better to keep our options open by submitting a map plan.

The proposed annexation areas (see Cover and Map "1", "2" and "3" in Exhibit "A" of resolution) to include in the map phase were also included in the 2006 map phase process. Staff believes that these areas still make a lot of sense for the City and recommend including them in the file submission of Map Plans of Potential Boundary Changes for the City of Manchester to the St. Louis County Boundary Commission.

Sincerely,

Larry Perney
City Administrator
City of Manchester