



OFFICE OF THE COUNTY EXECUTIVE

SAINT LOUIS COUNTY
41 SOUTH CENTRAL AVENUE
SAINT LOUIS, MISSOURI 63105

STEVEN V. STENGER

(314) 615-7016

May 15, 2018

St. Louis County Boundary Commission
168 North Meramec Avenue, Suite 140
Clayton, Missouri 63105

RE: 2018 Map Plan Submittal

Dear Boundary Commission Members:

On behalf of St. Louis County, I submit the County's 2018 map plan for review. There are a total of six maps submitted for the Commission's use, including an overall St. Louis County Map, and five geographic sub-area maps: North County, Mid County, West County, Southwest County, and South County. In addition to the 12 hardcopies of each map, I will have an electronic copy forwarded via email.

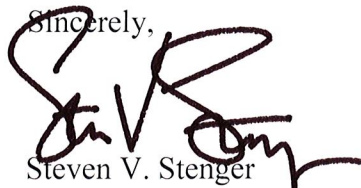
The County's map plan depicts proposed established unincorporated areas. Additionally, the County's map plan shows unincorporated areas with populations under 2,500 for which the County currently provides services and is willing to continue to provide services in the future.

I have designated Mr. Justin P. Carney, AICP, and Director of Planning, as the individual with the authority to act on my behalf with respect to the County's map plan. Mr. Carney can be contacted as follows:

Mr. Justin P. Carney, AICP, Director
St. Louis County Department of Planning
41 South Central Avenue, 5th Floor
Clayton, Missouri 63105
Phone: 314-615-2515
E-mail: JCarney@stlouisco.com

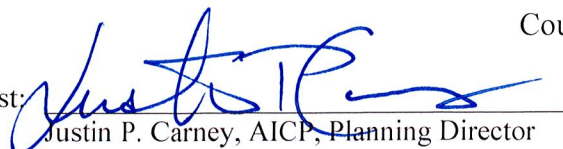
Further, I hereby certify that the accompanying map plan represents St. Louis County's official map plan proposal in conformance with the requirements of Section 72.423 RSMo.

Sincerely,



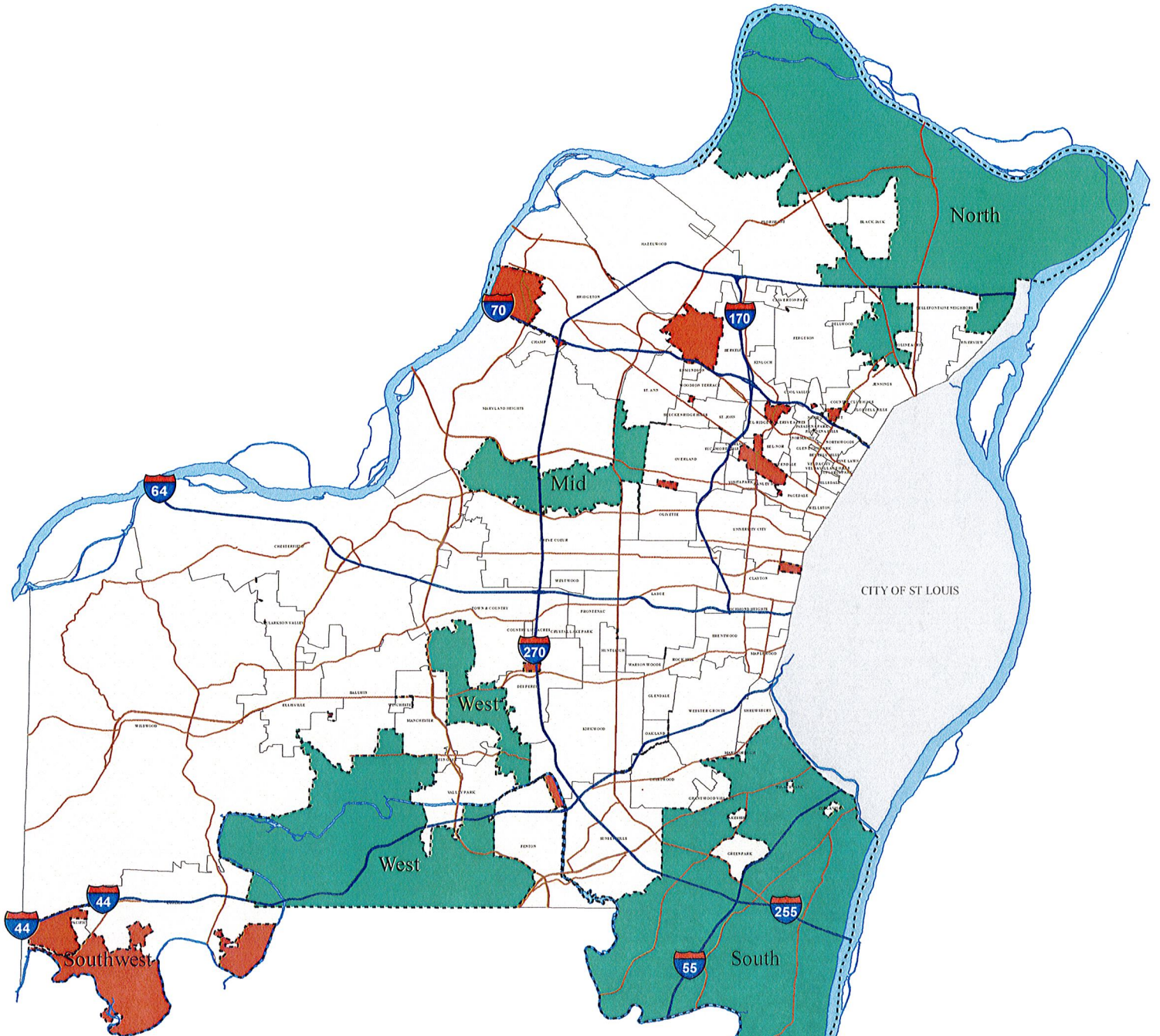
Steven V. Stenger
County Executive

Attest:



Justin P. Carney, AICP, Planning Director

2018 Map Plan for St. Louis County



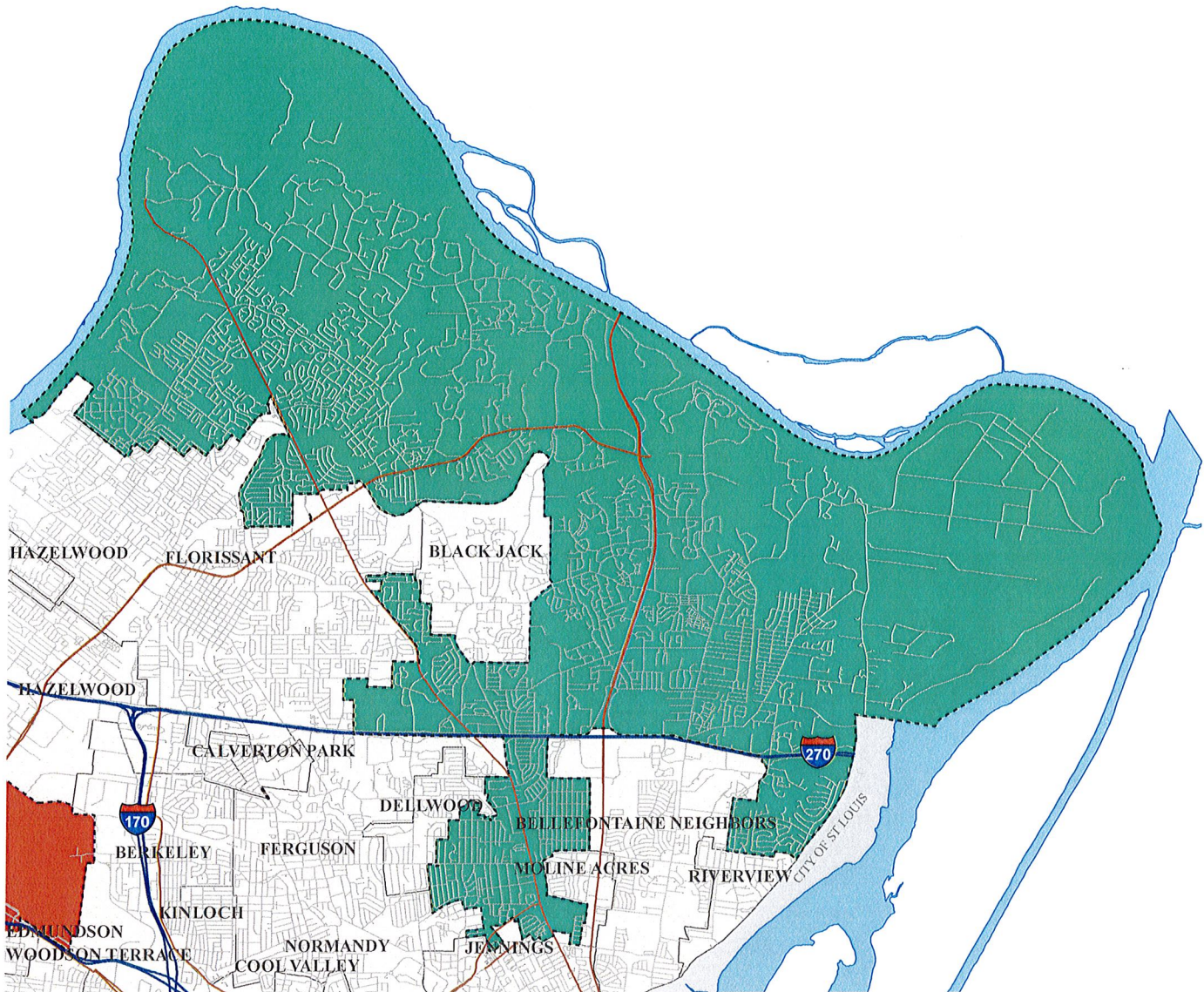
Proposed Established Unincorporated Areas
 Unincorporated Areas with a population below 2,500 for which the County will continue service delivery

Interstate Highways
 Major Roads
 Rivers
 Municipalities
 City of St. Louis

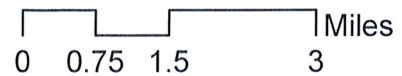


Miles
 0 1.75 3.5 7

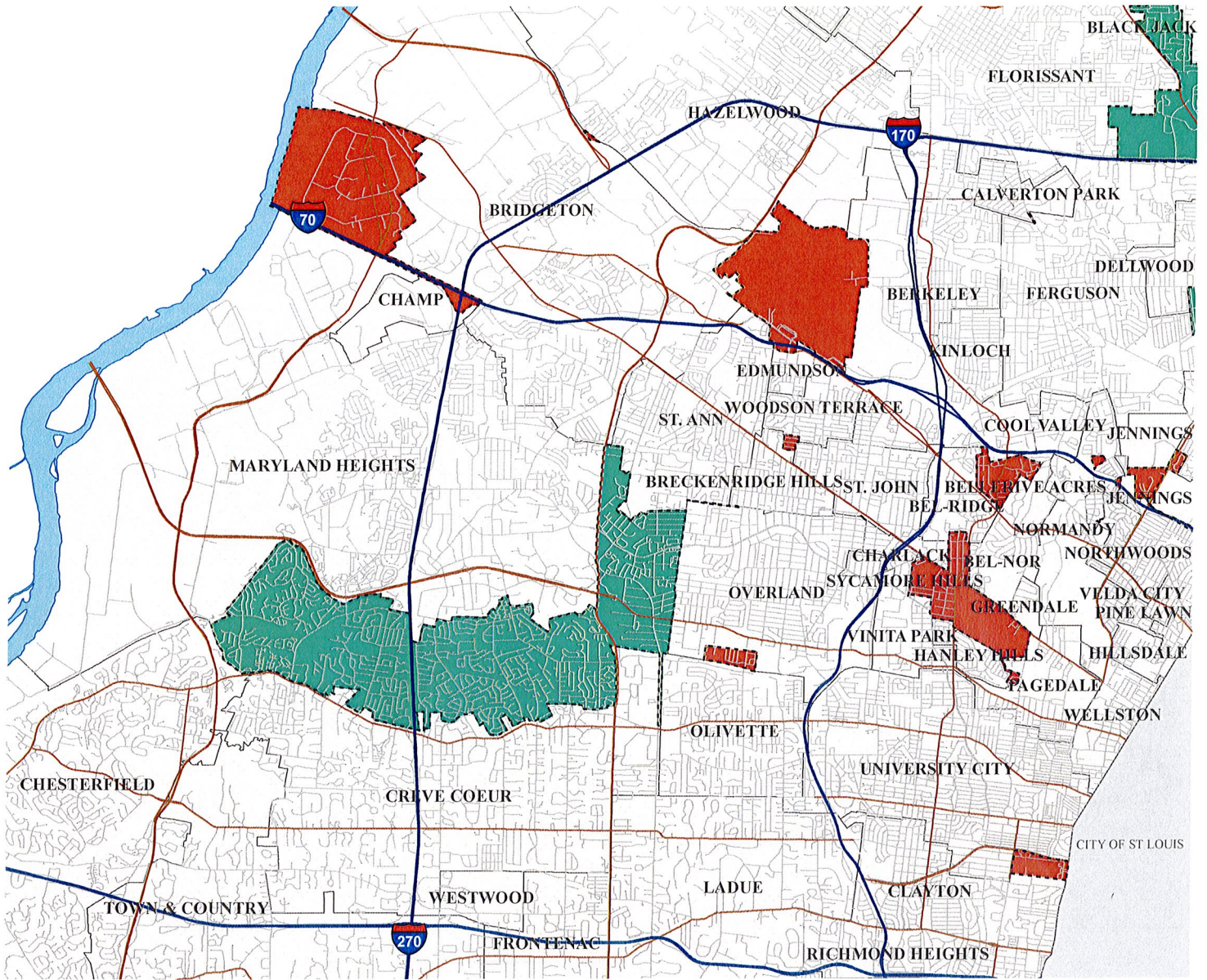
2018 Map Plan for North St. Louis County



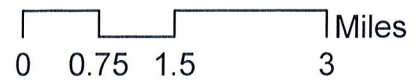
- Proposed Established Unincorporated Areas
- Unincorporated Areas with a population below 2,500 for which the County will continue service delivery
- Interstate Highways
- Major Roads
- Local Streets
- Rivers
- Municipalities
- City of St. Louis



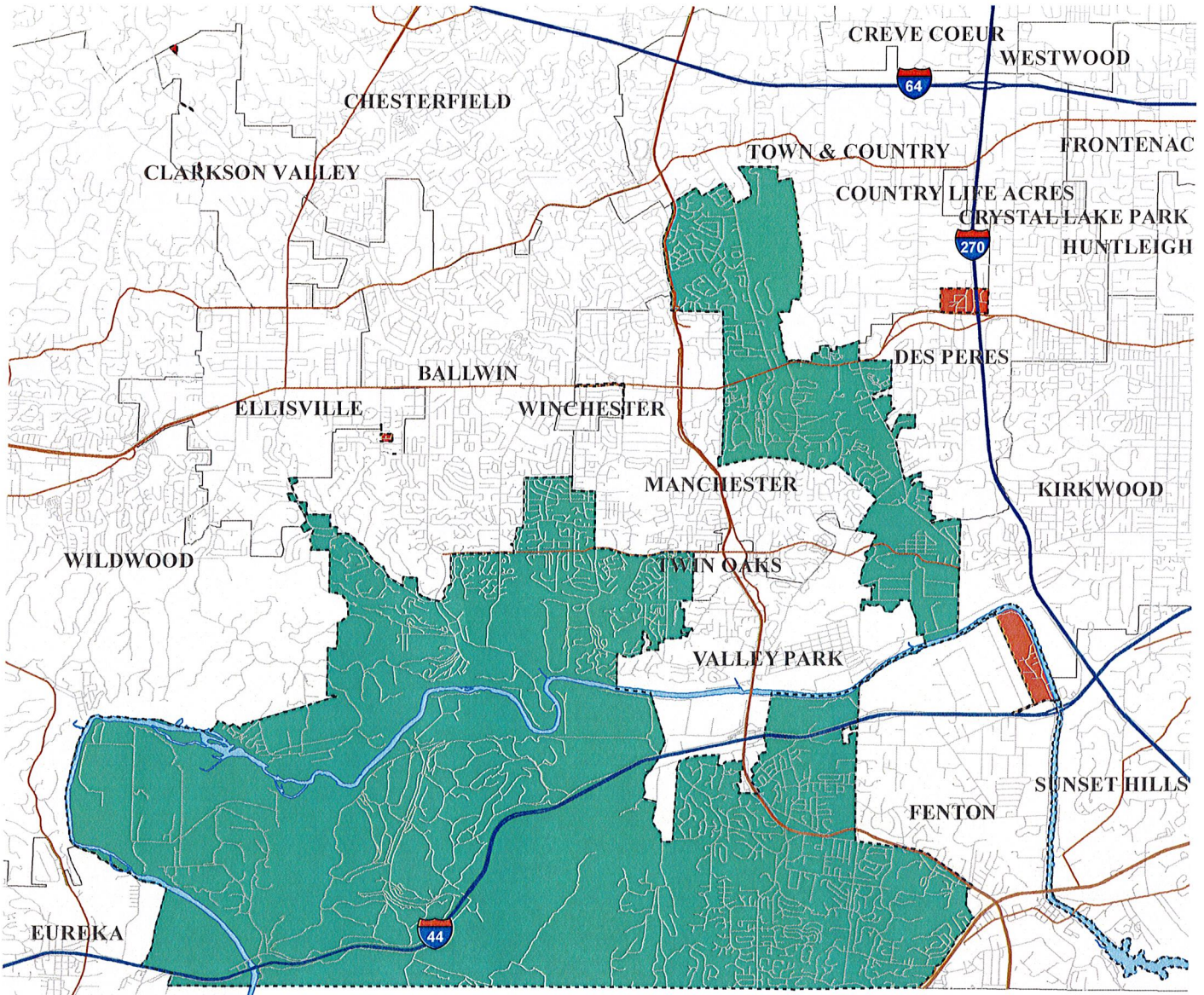
2018 Map Plan for Mid St. Louis County



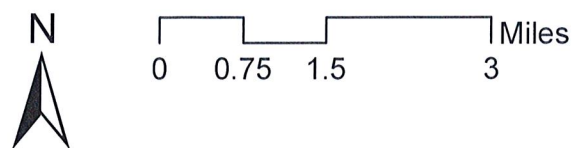
- Proposed Established Unincorporated Areas
- Unincorporated Areas with a population below 2,500 for which the County will continue service delivery
- Interstate Highways
- Major Roads
- Local Streets
- Rivers
- Municipalities
- City of St. Louis



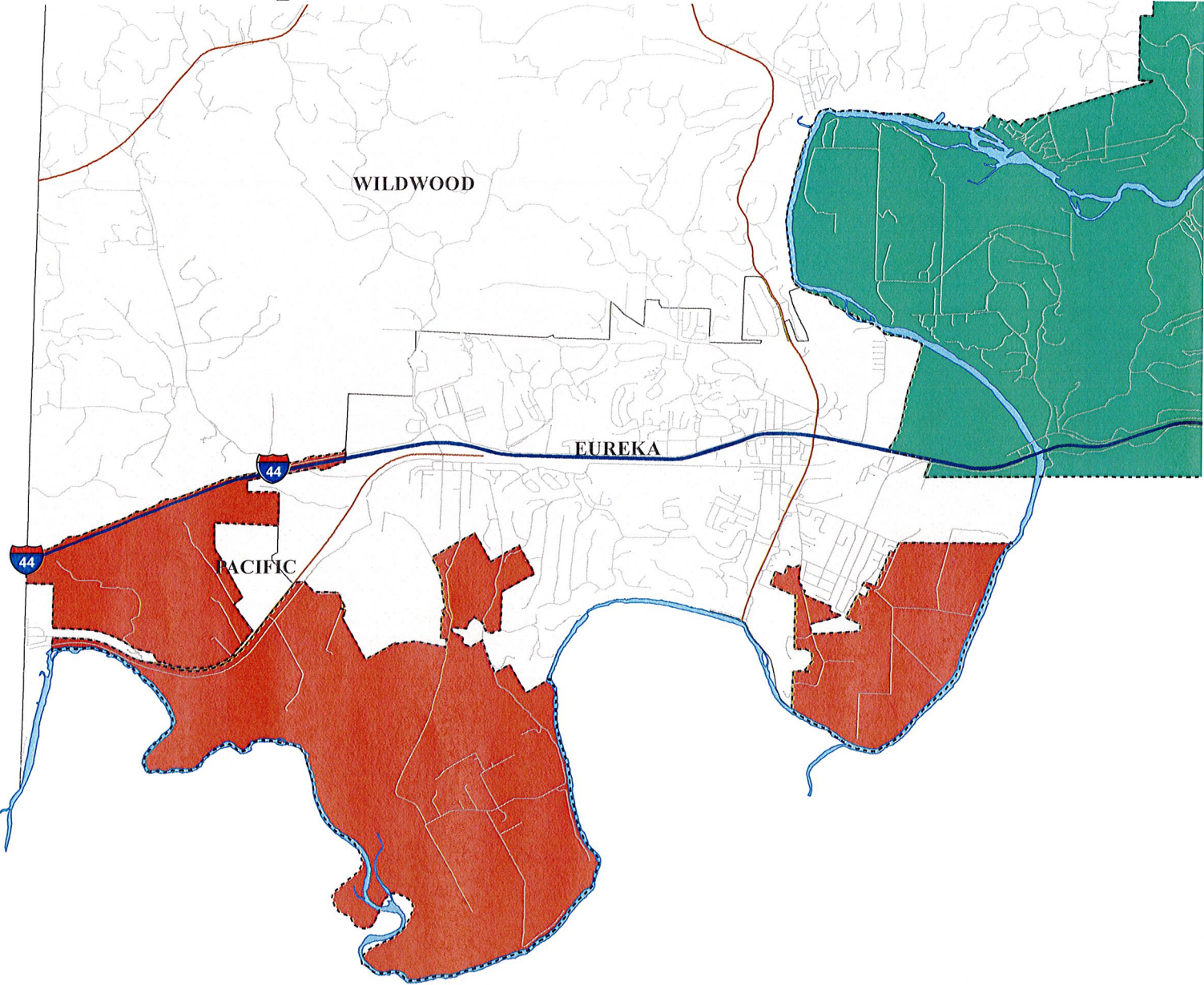
2018 Map Plan for West St. Louis County







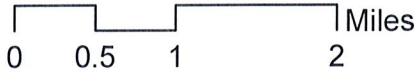
- Proposed Established Unincorporated Areas
- Unincorporated Areas with a population below 2,500 for which the County will continue service delivery
- Interstate Highways
- Major Roads
- Local Streets
- Rivers
- Municipalities



2018 Map Plan for Southwest St. Louis County



-  Proposed Established Unincorporated Areas
-  Unincorporated Areas with a population below 2,500 for which the County will continue service delivery
-  Interstate Highways
-  Major Roads
-  Local Streets
-  Rivers
-  Municipalities



2018 Map Plan for South St. Louis County

