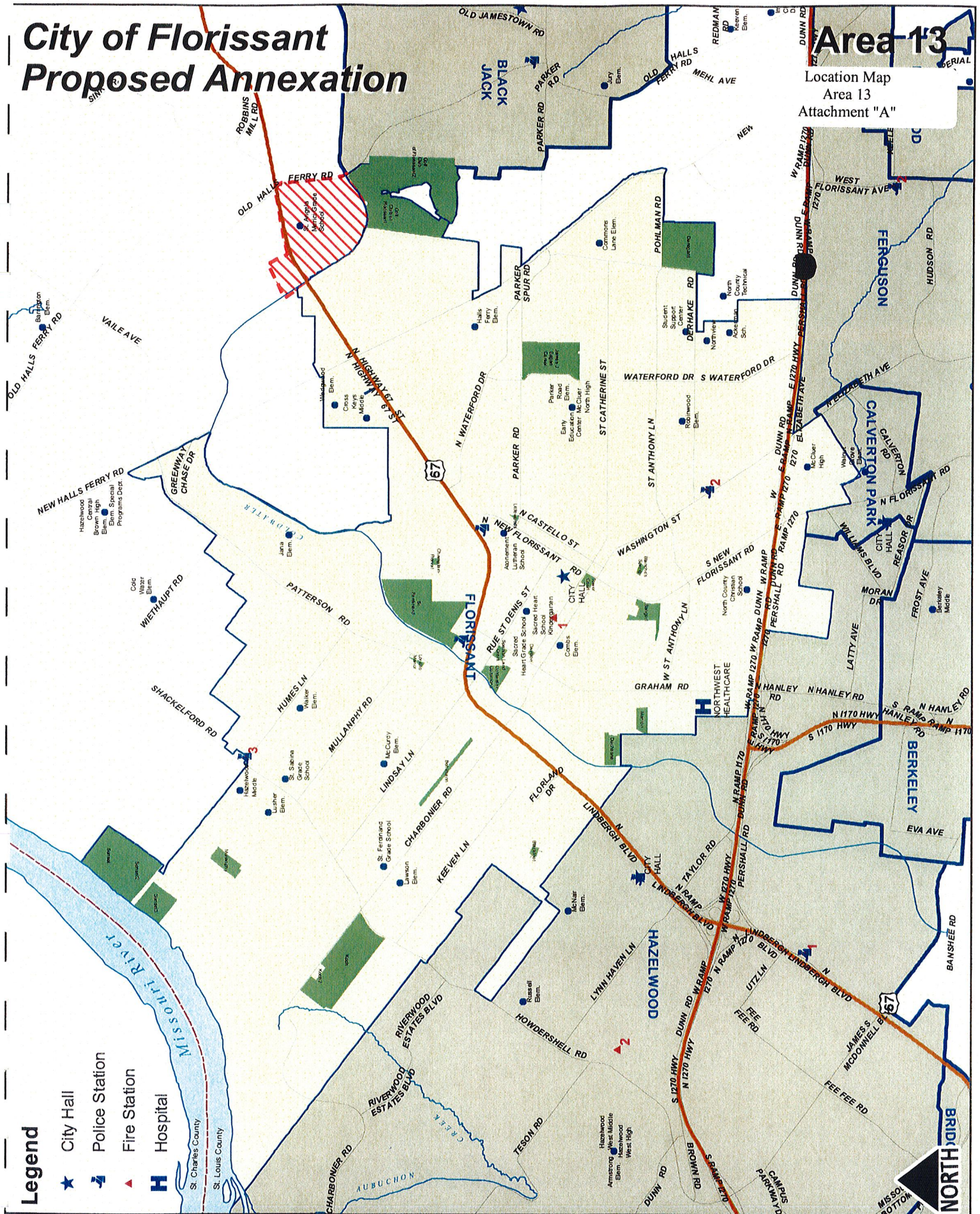


City of Florissant Proposed Annexation

Area 13

Location Map
Area 13
Attachment "A"



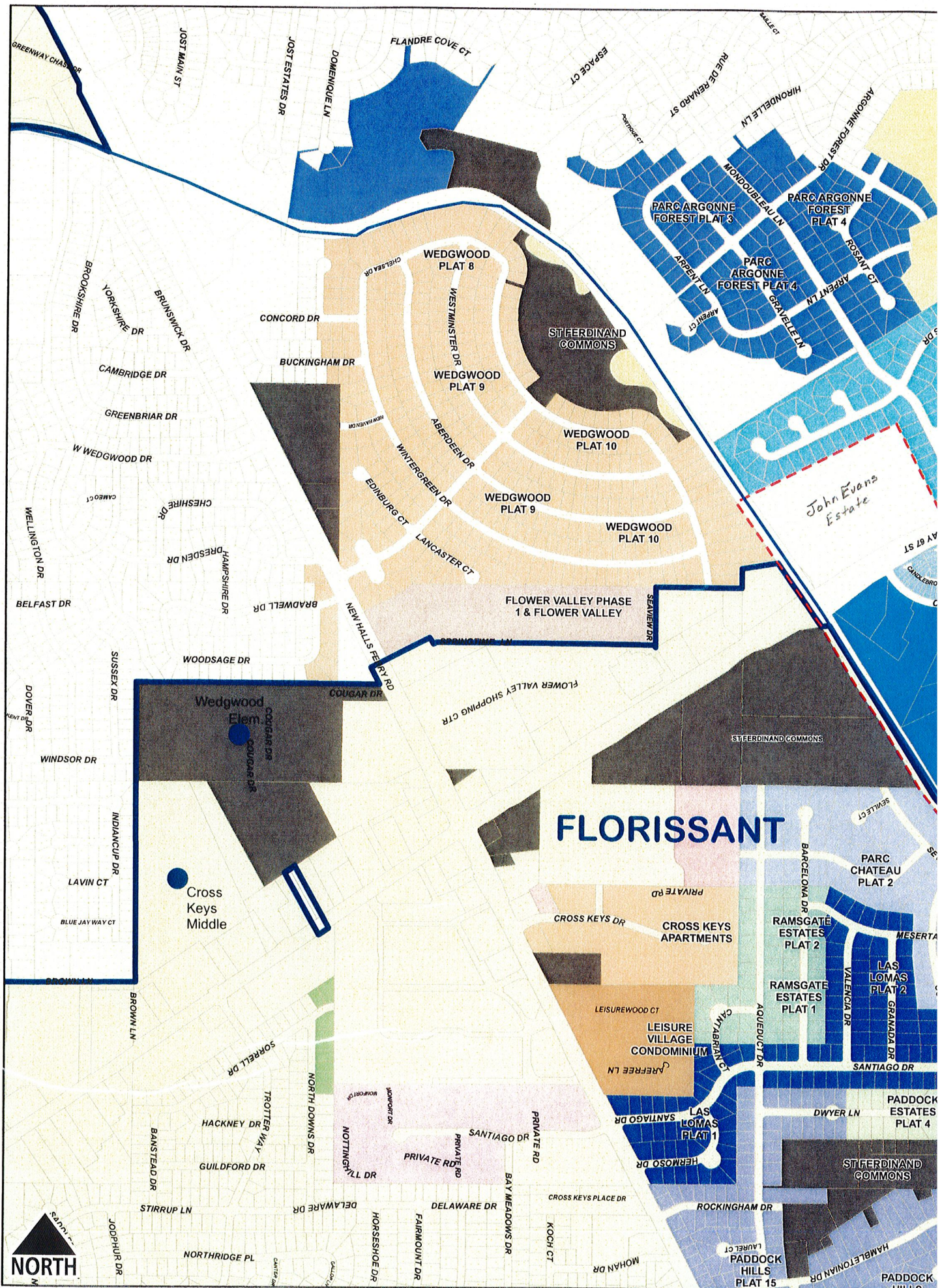
- Legend**
- ★ City Hall
 - 🚓 Police Station
 - 🚒 Fire Station
 - H Hospital

- Schools
- ▭ Municipal Boundary
- ▭ Parcels
- ▨ Annexation Area

0 3,750 Feet
1 inch = 3,750 feet

Sources: City of Florissant and St. Louis County Departments of Planning, Police, and Revenue.

FLORISSANT



Wedgwood Elem

Cross Keys Middle



Schools
7771
Municipal Boundary
770
750
700
650
600
550
500
450
400
350
300
250
200
150
100
50
0
-50
-100
-150
-200
-250
-300
-350
-400
-450
-500
-550
-600
-650
-700
-750
-800
-850
-900
-950
-1000

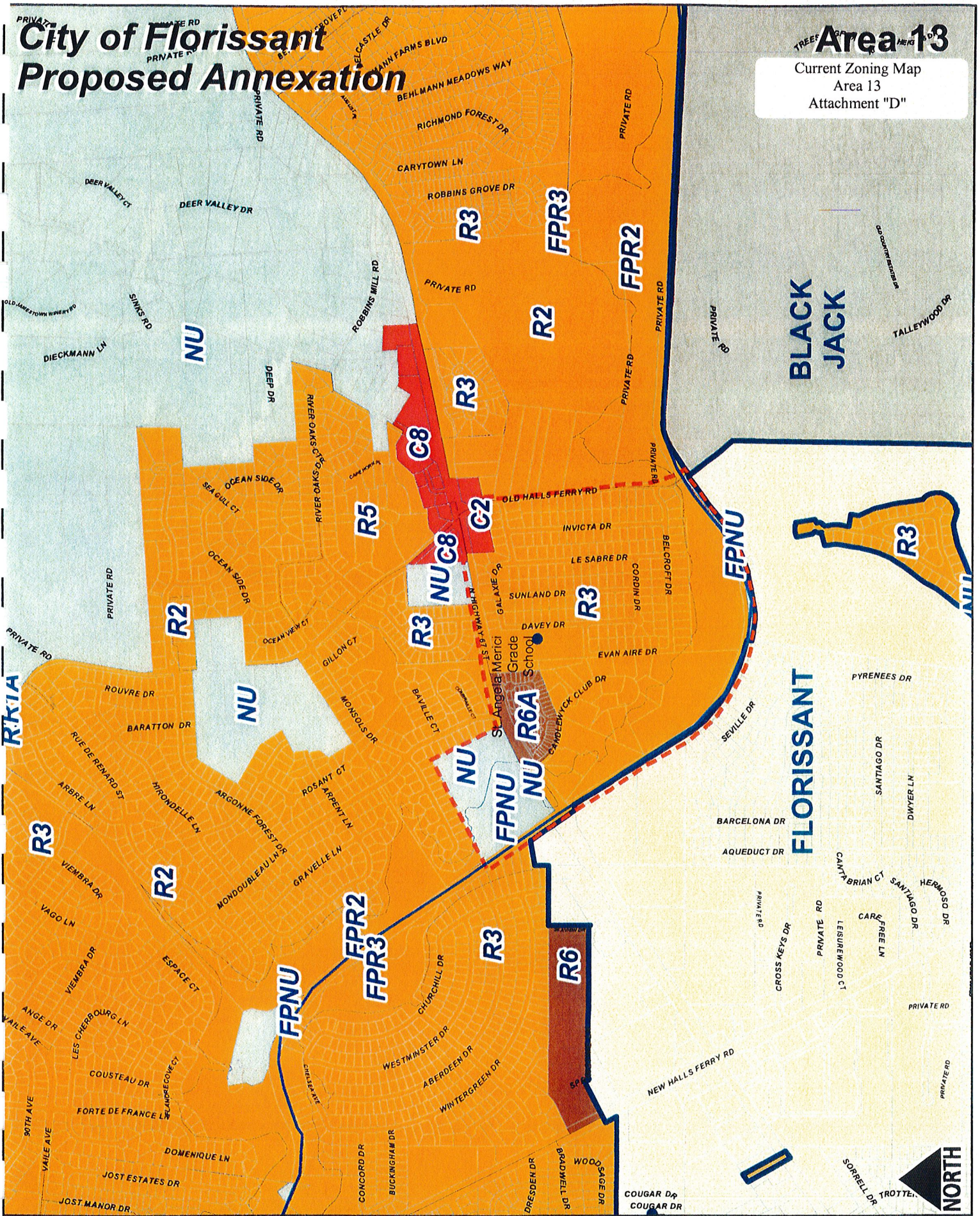
have. Due to occasional errors in the address locations, schools may be mislocated. Please report errors to the Designated Planning Services, City of Florissant, and St. Louis County Planning Services. © 2014 St. Louis County Planning Services.

ST. LOUIS COUNTY
PLANNING SERVICES
3434 STATE ST. STE. 200
ST. LOUIS, MO 63103

City of Florissant Proposed Annexation

Area 13

Current Zoning Map
Area 13
Attachment "D"



City of Florissant Proposed Annexation

Area 13

Proposed Zoning Map
Area 13
Attachment "E"

