



# CITY OF FERGUSON

MISSOURI 63135

June 26, 2018

St. Louis Boundary Commission  
168 N. Meramec Ave., Suite 140  
Clayton, MO 63105

Dear Boundary Commissioner,

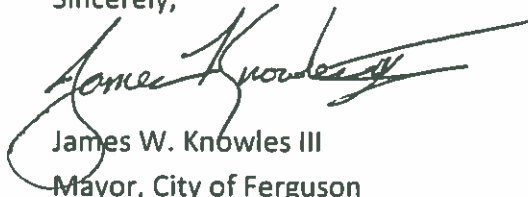
The City is hereby transmitting the attached official map plan pursuant to the regulations for annexation as promulgated by the St. Louis County Boundary Commission. The City certifies that the attached map represents Ferguson's official map plan proposal in accordance with requirements set forth in RSMo. §72.423.

Furthermore, the City of Ferguson designates the following administrative representative who has the authority to act on the City of Ferguson's behalf regarding this map plan and other matters related to the annexation proposal.

De'Carlton Seewood, City Manager  
City of Ferguson  
110 Church Street  
Ferguson, MO 63135

If you have any questions regarding the attached map plan or this transmission, please contact me at  
(314) 524-5152.

Sincerely,



James W. Knowles III  
Mayor, City of Ferguson

Enclosures

CITY HALL  
110 Church St.  
(314) 521-7721  
FAX # (314) 524-5173

CLERK of COURT  
222 S. Florissant Rd.  
(314) 524-5264  
FAX # (314) 524-4127

POLICE  
DEPARTMENT  
222 S. Florissant Rd.  
(314) 522-3100  
FAX # (314) 524-5290

FIRE  
DEPARTMENT  
200 S. Florissant Rd.  
(314) 522-1122  
FAX # (314) 521-9213

RECREATION  
DEPARTMENT  
1050 Smith Ave.  
(314) 521-4661  
FAX # (314) 524-5077

MUNICIPAL  
GARAGE  
901 Ferguson Ave.  
(314) 521-8373  
FAX # (314) 521-5165

# Resolution

**INTRODUCED BY: COUNCIL AS A WHOLE**

**A RESOLUTION ADOPTING A BOUNDARY CHANGE PLAN FOR SUBMISSION TO THE ST. LOUIS COUNTY BOUNDARY COMMISSION AND AUTHORIZING THE CITY MANAGER TO ACT ON THE CITY'S BEHALF IN TRANSACTIONS WITH THE BOUNDARY COMMISSION FOR THE PURPOSE OF POTENTIAL FUTURE ANNEXATIONS**

*Whereas,* the City of Ferguson desires to have the option of annexing certain unincorporated territory in St. Louis County contiguous to the City as hereinafter described when and if the best wishes of the City should warrant.

***NOW, THEREFORE, BE IT RESOLVED BY THE CITY COUNCIL OF THE CITY OF FERGUSON, MISSOURI, as follows:***


**SECTION 1.** The City Council, upon due consideration, adopts the Map Plan attached hereto as Exhibit A and incorporated herein by this reference as the boundary change plan of the City of Ferguson for annexation of territory located in unincorporated St. Louis County, known as Area 1 and Area 2 for the current planning cycle from 2018 through 2023 as contemplated by Sections 72.400 to 72.433, RSMo.

**SECTION 2.** The Map Plan submitted is consistent with the rules of the Boundary Commission and Sections 72.400 to 72.433 RSMo.

**SECTION 3.** The City Manager of the City of Ferguson is hereby authorized and directed to submit such Map Plan to the St. Louis County Boundary Commission for potential annexation of the aforesaid territory located in unincorporated St. Louis County and to take further actions and execute all necessary documents to effectuate such purpose.

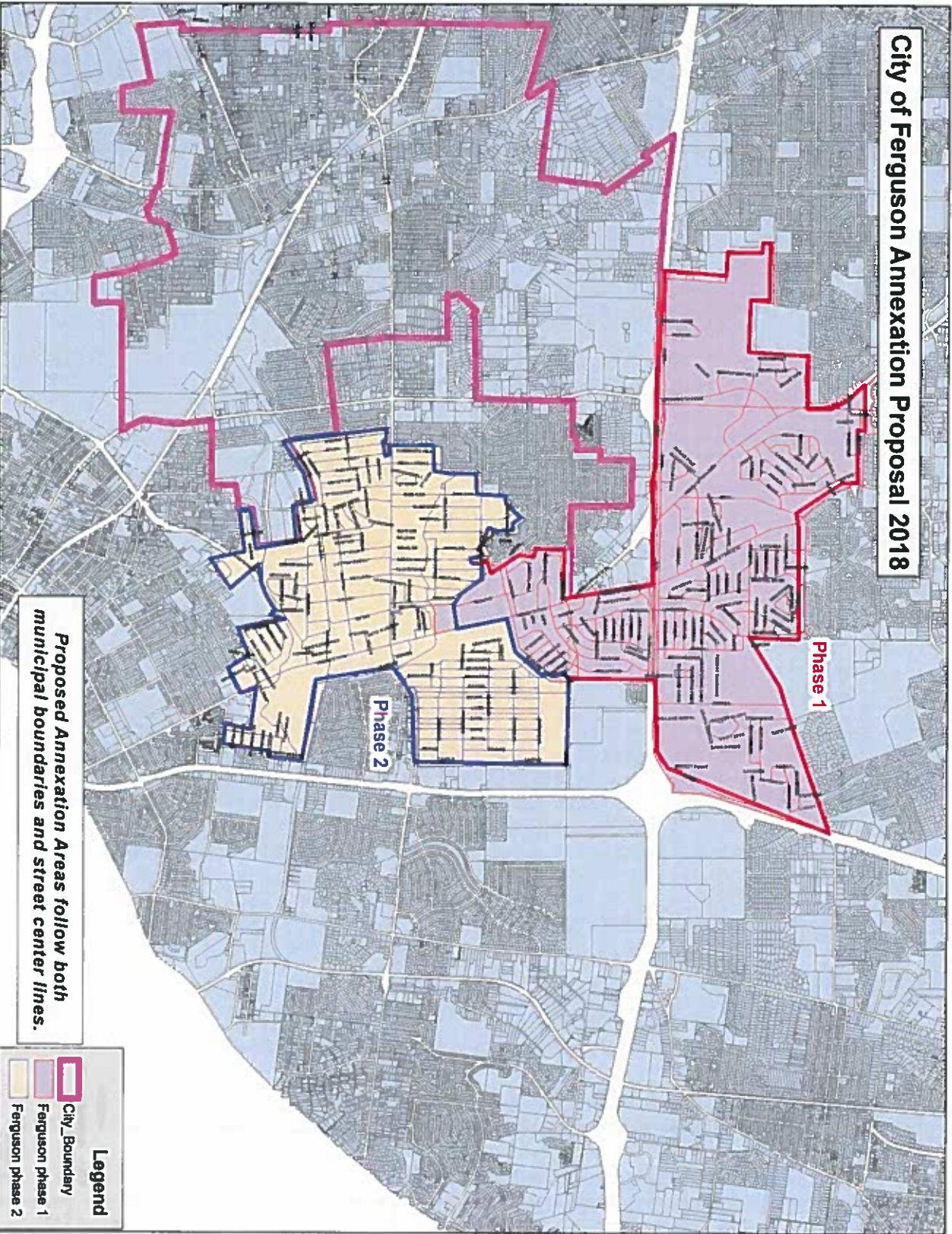
**PASSED BY THE CITY COUNCIL OF THE CITY OF FERGUSON, MISSOURI, ON THIS 26<sup>th</sup> DAY OF June, 2018.**



  
James W. Knowles III, Mayor

ATTEST:  
  
Octavia Pittman, City Clerk

**City of Ferguson Annexation Proposal 2018**



*Proposed Annexation Areas follow both municipal boundaries and street center lines.*

**Legend**

-  City Boundary
-  Ferguson phase 1
-  Ferguson phase 2