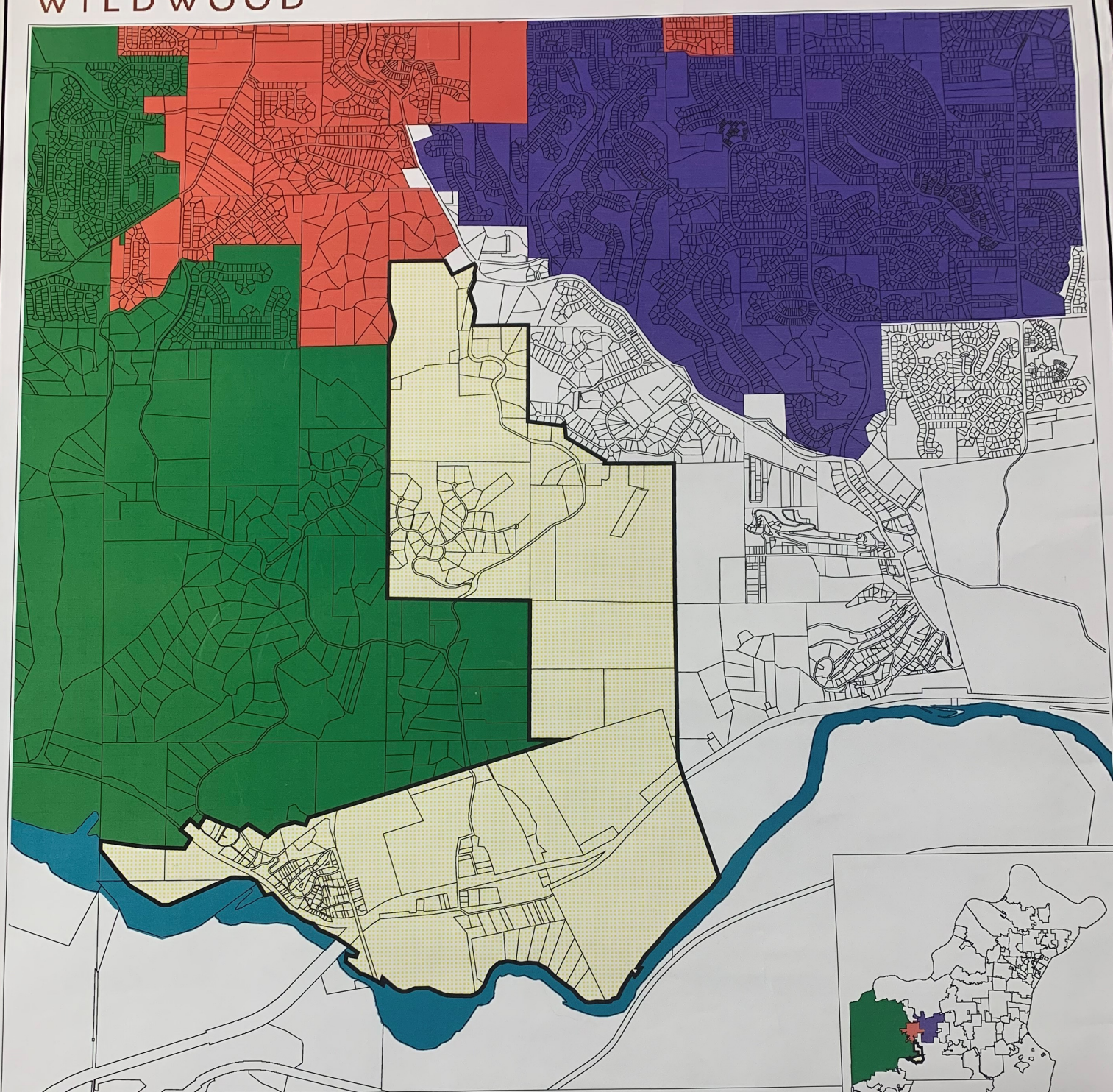




WILDWOOD

MAP PLAN AREA



Map Plan Area

Meramec River

Existing Boundaries:

Ballwin

Ellisville

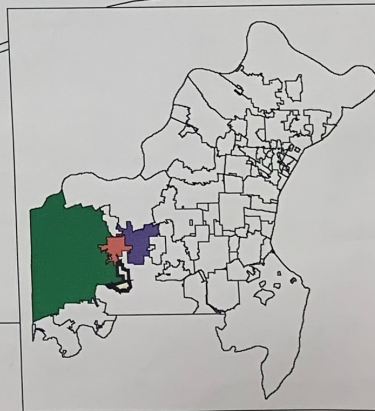
Wildwood

Unincorporated County



0 2000 4000 Feet

*Prepared by the City of Wildwood
Department of Planning
St. Louis County, Missouri
June 2000



STATISTICS

Total Number of Parcels = 28

Total Acreage = 1,724.22

Total Square Miles = 2.694

Largest Parcel = 335 acres

Smallest Parcel = .015 acre