

ROBERT J. DOERR  
MAYOR

9641 Bellefontaine Road  
St. Louis County, MO 63137  
314 / 867-0076  
Fax: 314 / 867-1790



April 23, 2012

St. Louis County Boundary Commission  
168 N. Meramec Ave., Suite 140  
Clayton, MO 63105

Dear Boundary Commission:

Pursuant to the regulations for annexation promulgated by the St. Louis County Boundary Commission, the City of Bellefontaine Neighbors is hereby transmitting the required map plan for the identified portion of unincorporated territory in St. Louis County.

The City further certifies that the attached map represents Bellefontaine Neighbors' official map plan proposal in conformance with the requirements set forth in RSMo § 72.423.

Furthermore, the City of Bellefontaine Neighbors designates the following administrative representatives as the contact person who has the authority to act on its behalf regarding this map plan and other matters related to the annexation proposal:

Robert J. Doerr, Mayor  
Bellefontaine Neighbors City Hall  
9641 Bellefontaine Rd.  
Bellefontaine Neighbors, Missouri 63137  
(314) 867-0076

If you have any questions regarding the attached map and or this transmission, please contact me.

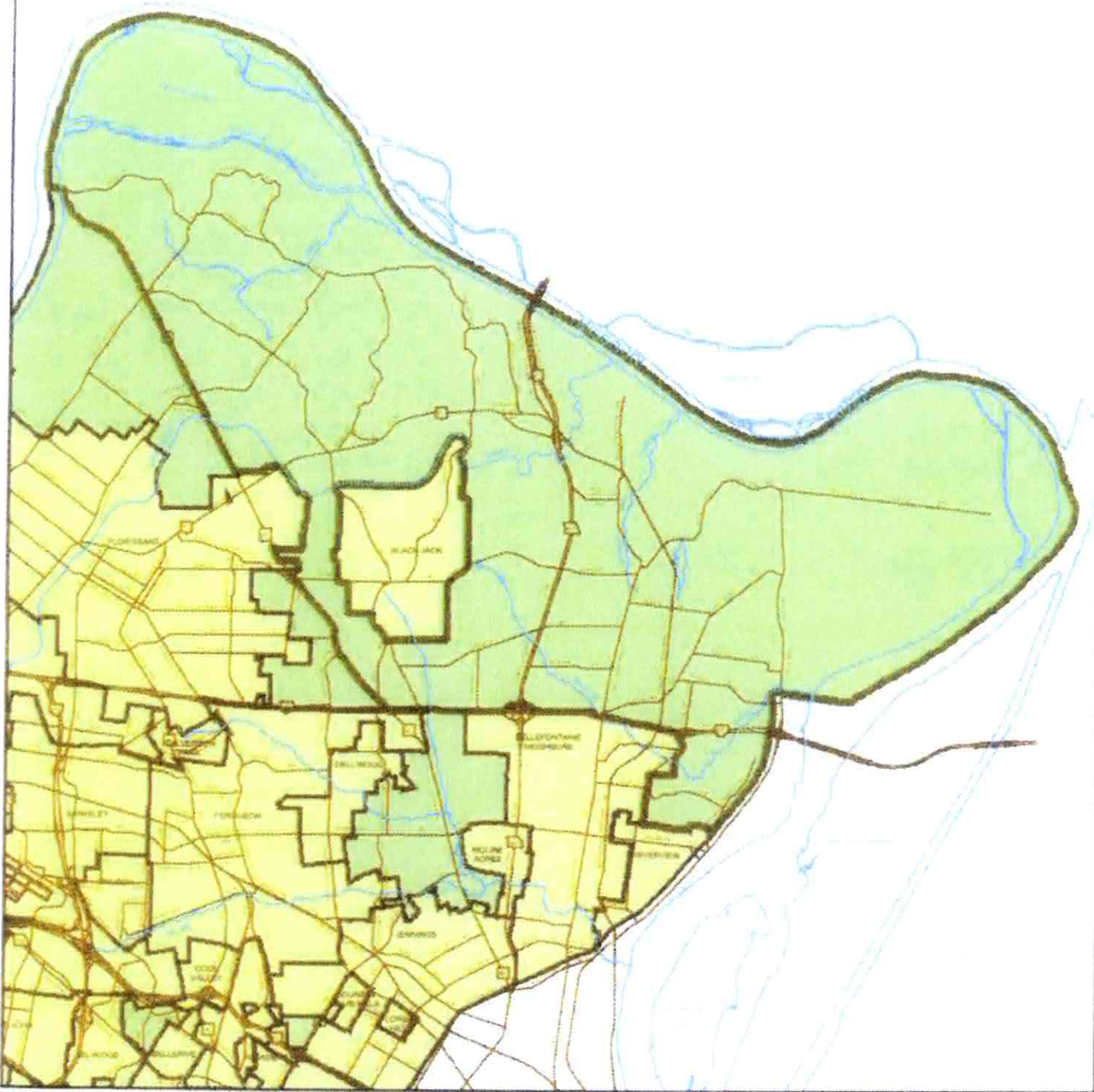
Sincerely,

A handwritten signature in cursive script, appearing to read "Robert J. Doerr", is positioned above the printed name.

Robert J. Doerr,  
Mayor

# Map Plan Submission - City of Bellefontaine Neighbors

FP 01/14/12  
"A"  
2/12



- Legend**
- Rivers
  - Major Roads
  - ▭ Map Plan Area
  - ▭ Unincorporated Areas
  - ▭ Municipal Boundaries





Introduced By: Alderman Jordan

Resolution No. 2012-5

**RESOLUTION**

**WHEREAS**, The City of Bellefontaine Neighbors desires to have the option of annexing certain unincorporated territory in St. Louis County contiguous to the City as hereinafter described when and if the best interests of the City should warrant;

**NOW THEREFORE, BE IT RESOLVED BY THE BOARD OF ALDERMEN FOR THE CITY OF BELLEFONTAINE NEIGHBORS, MISSOURI, AS FOLLOWS:**

**SECTION ONE.**

The Board of Aldermen, upon due consideration, adopts the map plan attached hereto as Exhibit A and incorporated herein by this reference as the plan of the City of Bellefontaine Neighbors for annexation of territory located in unincorporated St. Louis County for the current planning cycle as contemplated by Sections 72.400 to 72.433, RSMo.

**SECTION TWO.**

The map submitted is consistent with the Rules of the Boundary Commission and Sections 72.400 to 72.433 RSMo.


**SECTION THREE.**

The Mayor is hereby authorized and directed to submit such Map Plan to the St. Louis County Boundary Commission for the annexation of the aforesaid territory located in unincorporated St. Louis County.

**PASSED BY THE BOARD OF ALDERMEN FOR THE CITY OF BELLEFONTAINE NEIGHBORS THIS 19<sup>th</sup> DAY OF April, 2012.**

  
\_\_\_\_\_  
Robert J. Doerr, Mayor

Attest:

  
\_\_\_\_\_  
Denise Donovan, City Clerk